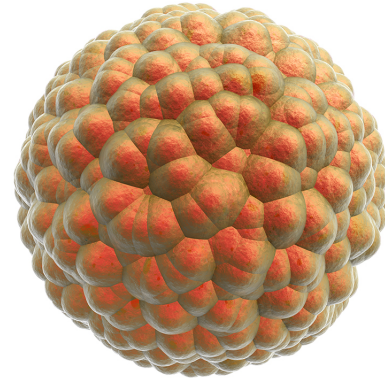
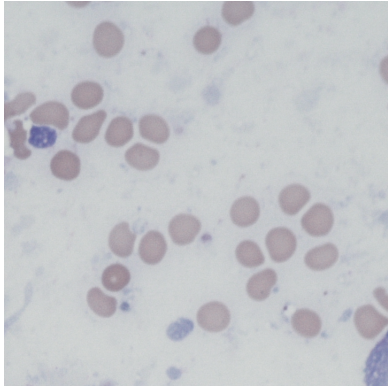


2D meet 3D



You don't have to **Count** on **Vision** any longer...

Meet
Moxi 
Gold Standard Cell Counter



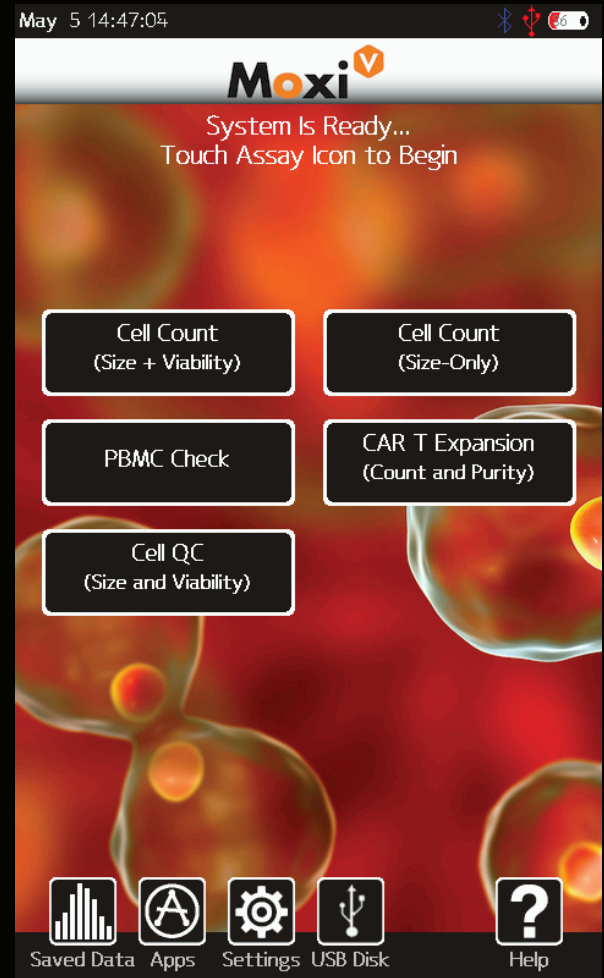
**Precision Counting with Combined
Coulter Principle + Fluorescence**

Precise. Accurate. Cell QC.

Introducing: **Moxi V**

The all new **Moxi V** delivers the uniquely powerful combination of **Coulter Principle** (electric impedance) cell sizing with **simultaneous fluorescence** to provide the most accurate cell counts, size, and viability in an affordable, easy-to-use format.

With typical **CVs of 2-3%** on all measured parameters, the **Moxi V** easily outperforms all other instruments in this class. If your lab requires precision and accuracy for **COVID-19** studies, **PMBC** analysis, **CAR T** expansion, or routine **Cell QC**, the **Moxi V** is your machine.



Just **TOUCH** and **GO**...

1



15 seconds

**Insert Cassette
Load Sample**

2

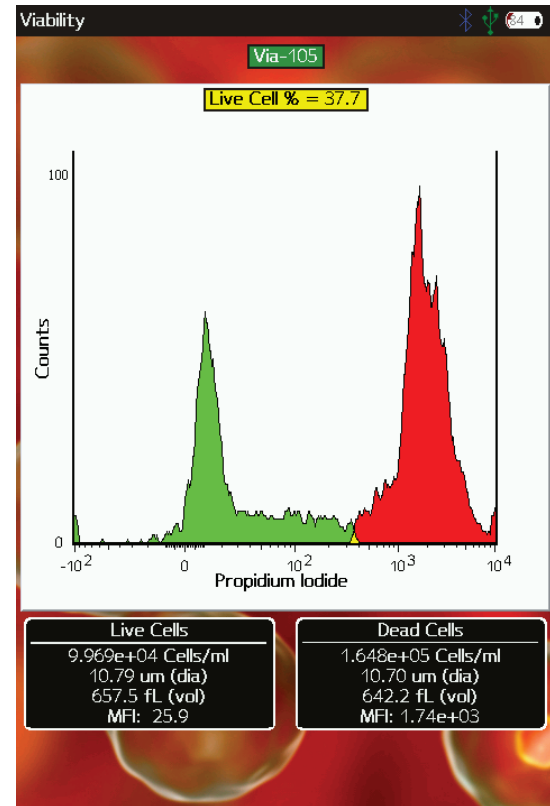
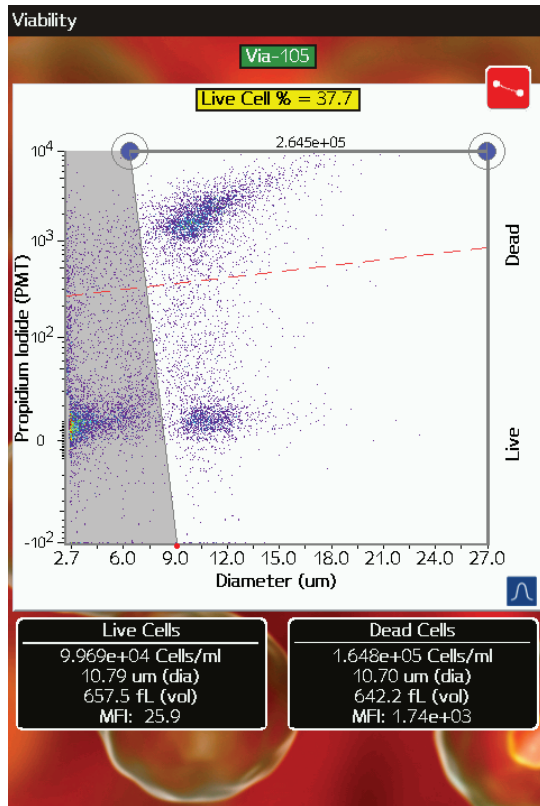


10 seconds

Close Door
System will automatically run test.

3

The Moxi V OS will auto-analyze your results, thereby eliminating user to user variability.



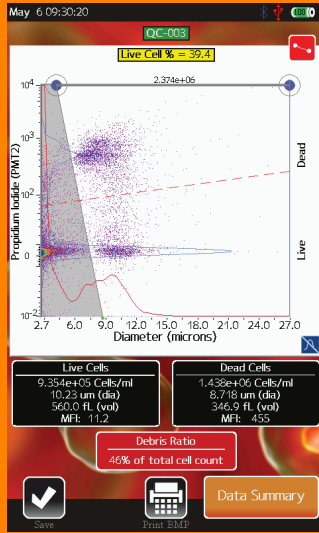
Jurkat cells were analyzed using the new Cell QC App with a PI stain. The Auto-Gating algorithm analyzes results in an accurate, repeatable way to provide the most consistent results possible.

You have the option to analyze results in a number of histogram formats for additional clarity.

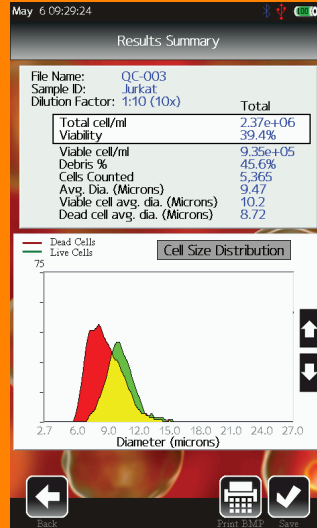
Run in Batch Mode using the new Cell QC App.



Set up your Batch



Perform the Analysis

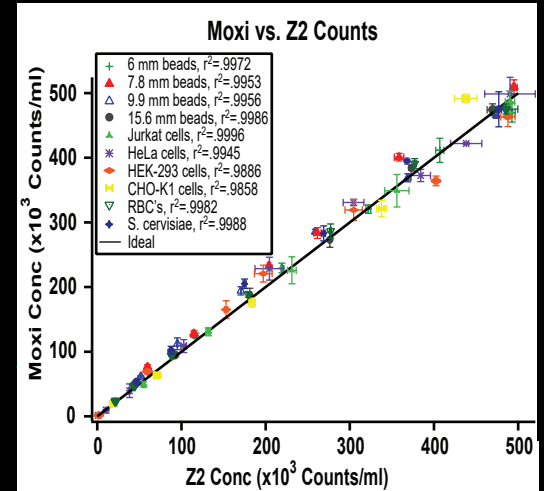


Review/Export Results

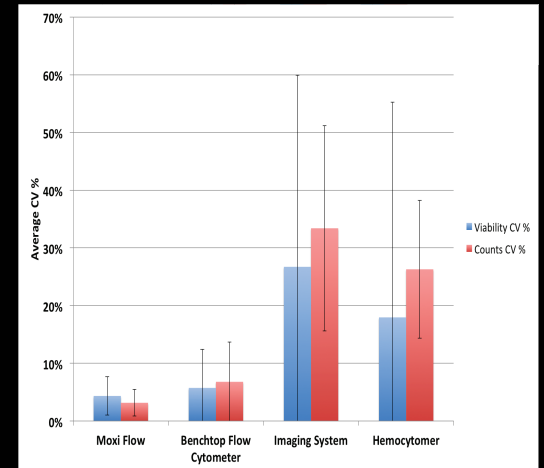
The all new Cell QC app allows you to run multiple tests of the same sample type in Batch Mode. User-to-user variability is eliminated by auto-finding both live and dead cell populations, while excluding cellular debris and RBC contamination (PBMC app). Batch mode data is exported in CSV and FCS 3.1 formats

Benchmark Data

Counts:



Viability:




S P E C I F I C A T I O N S

Moxi V™ System

Detection Channels:	4 (1 fluorescent, extinction, cell volume, cell count)
Laser wavelength:	532 nm
Number of PIN Diodes:	2
Optical Detection Region:	561 nm/LP (e.g. PE, PI, tdTomato)
Cell Size & Count Detection:	Impedimetric (Coulter Principle)
Display:	800 x 480 color touchscreen
Resolution:	1000 histogram bins
Weight:	7.9 lbs
Dimensions:	9.3"L x 8.7"W x 5.8"H
Battery:	Lithium Ion, 7500 mAh
Data Storage:	4 GB uSD
AC Power:	100-240 V, 50/60 Hz, 1 Amps
Connectivity:	USB on-the-go (PC or MAC C compatible)
Data Output Format:	FCS 3.1 and screen shots (.bmp)
Pre-Programmed Tests:	Cell QC, PBMC Check, CAR T Expansion, Cell Count & Viability, Cell Count (size only)
Open Platform:	561 nm/LP: PE, PI, RFP (e.g. DsRed, tdTomato), 7-AAD, PE-Texas Red

Cassette Performance (2 tests per cassette)

Effective Diameter - Size Range (µm):	3 - 26 µm
Cell Volume (fL):	14 - 9202 fL
Measurement Time:	10 seconds
Concentration:	10,000 to 1,000,000 cells per ml
Sample Volume (µL):	60 µL

 ORFLO Technologies 260
Northwood Way Ketchum,
ID 83340

 info@orflo.com

 855 879 6694

 866 804 3512

 www.orflo.com



Industriestrasse 12
CH-6210 Sursee

mail@witec.ch

T 041 250 53 57

The logo for Witec, featuring the word "witec" in a white, lowercase, sans-serif font. The letter "i" is replaced by a blue DNA double helix structure. The logo is set against a dark blue background.

experts in life science products

The logo for Moxi, featuring the word "Moxi" in a bold, black, sans-serif font. The letter "o" is orange. To the right of the word is an orange hexagon containing a white letter "V".