

# AdvanStain™ Ponceau

## Quick protein stain for membranes

**AdvanStain Ponceau** rapidly detects proteins on nitrocellulose and PVDF membranes, allowing you to check the quality of protein transfer before proceeding to Western blotting. With AdvanStain Ponceau you can quickly make sure that protein transfer has been even across the entire blot, and that no signs of bubbles or other transfer artifacts are present. The staining is reversible and after destaining, membranes can immediately be used for Western blotting.

## Advantages

- **QUICK** – detect proteins in 5 minutes or less
- **REVERSIBLE** – destain in minutes
- **COMPATIBLE** – after destaining, PVDF and nitrocellulose membranes are ready for Western blotting

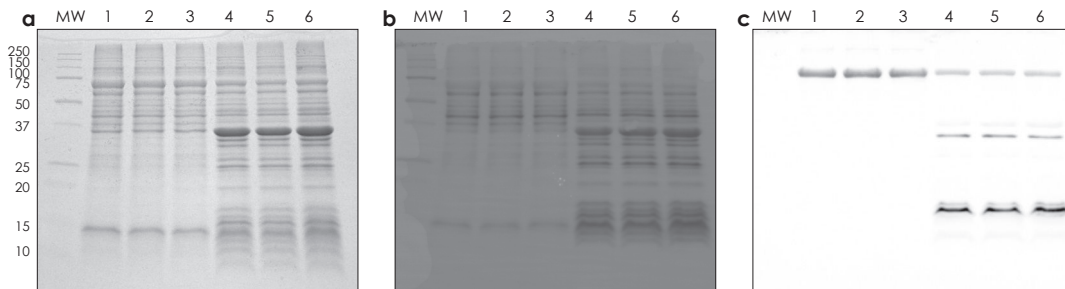


Figure 1. AdvanStain Ponceau was used to check protein transfer before Western blotting to detect solubilization of a protein of interest from inclusion bodies. Duplicate gels were run with the same set of protein samples and (a) one gel was stained with Comassie blue. The other gel was transferred to a PVDF membrane, and (b) transferred protein was detected by staining the membrane with AdvanStain Ponceau. (c) After destaining with water, the membrane in (b) was subjected to Western blotting to detect the 72-KDa protein of interest. Lanes 1-3, solubilized inclusion bodies. Lanes 4-6, insoluble pellets. The Western blot was detected using WesternBright Quantum HRP substrate.

## Ordering Information

Catalog Number	Product	Size
R-03021-D50	AdvanStain™ Ponceau	500 ml

## Related Products

L-08001-010	Low-Fluorescence PVDF Transfer Membrane	7 x 9 cm	10 sheets
L-08012-010	Low-Fluorescence PVDF Transfer Membrane	10 x 15 cm	10 sheets
L-08014-010	Low-Fluorescence PVDF Transfer Membrane	13 x 18 cm	10 sheets
L-07031-005	Incubation Tray, Traditional Red Body with Clear Lid	5 x 7 cm	5/pack
L-07032-005	Incubation Tray, Traditional Black Body with Clear Lid	6 x 9 cm	5/pack
L-07033-005	Incubation Tray, Traditional Blue Body with Clear Lid	9 x 11 cm	5/pack

## Advansta Corporation

1505 Adams Drive, Suite B1 | Menlo Park, CA 94025  
 Tel: 650.325.1980 | Fax: 650.325.1904 | Email: sales@advansta.com  
 Product information: [www.advansta.com/AdvanStain\\_Ponceau](http://www.advansta.com/AdvanStain_Ponceau)

Copyright © 2013-2014 Advansta. All rights reserved. The Advansta logo is a registered trademark of Advansta. AdvanStain™ is a trademark of Advansta. All other trademarks, service marks and tradenames appearing in this brochure are the property of their respective owners.