

NanoDrop™ ONE/ONE^c

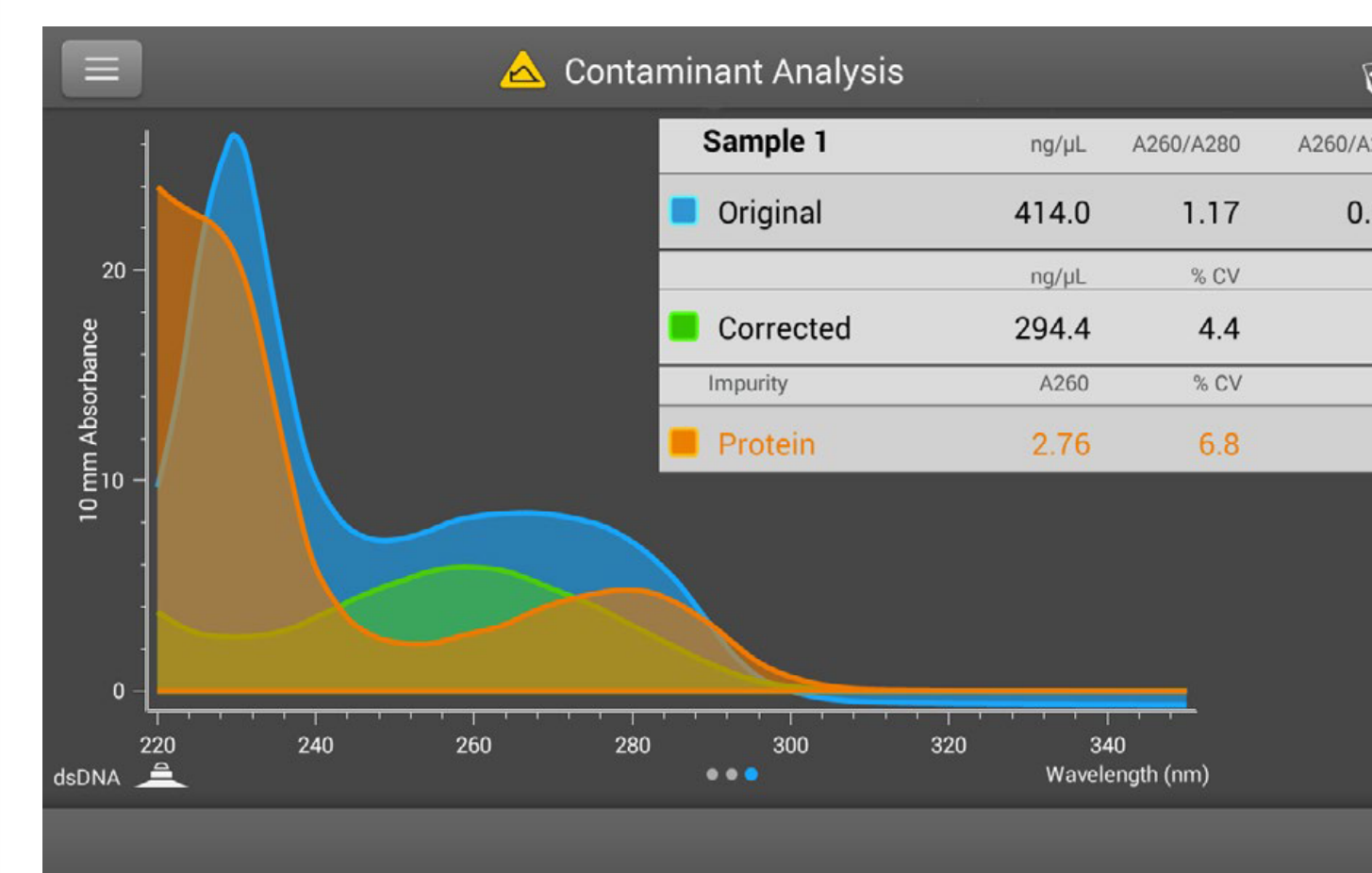
Intelligent Microvolume Analysis

Quantify & qualify DNA, RNA & protein samples in seconds - **with only 1-2 μ L!**



Distinguishing DNA and RNA

Get reliable downstream assay results and avoid potential rework by identifying nucleic acid contamination up front in your samples.

**Original:**

Concentration result without any Acclaro Contaminant correction applied. **Blue Spectrum**

**Corrected:**

Concentration result with Acclaro Contaminant correction applied. **Green Spectrum**

**Impurity:**

Contaminant that has been detected and how much 260 nm absorbance the contaminant contributed to 260 nm peak. **Orange Spectrum**

- Acclaro Sample Intelligence
- No Consumables Required
- Minimal Sample Preparation
- 21 CFR Part 11 Compliance
- Versatile Data Management

NanoDrop™ Eight

Quantify **8 samples in 20 seconds**



NanoDrop™ Lite Plus

Compact & **portable**



FUSION FX6 | FX7 ABSOLUTE

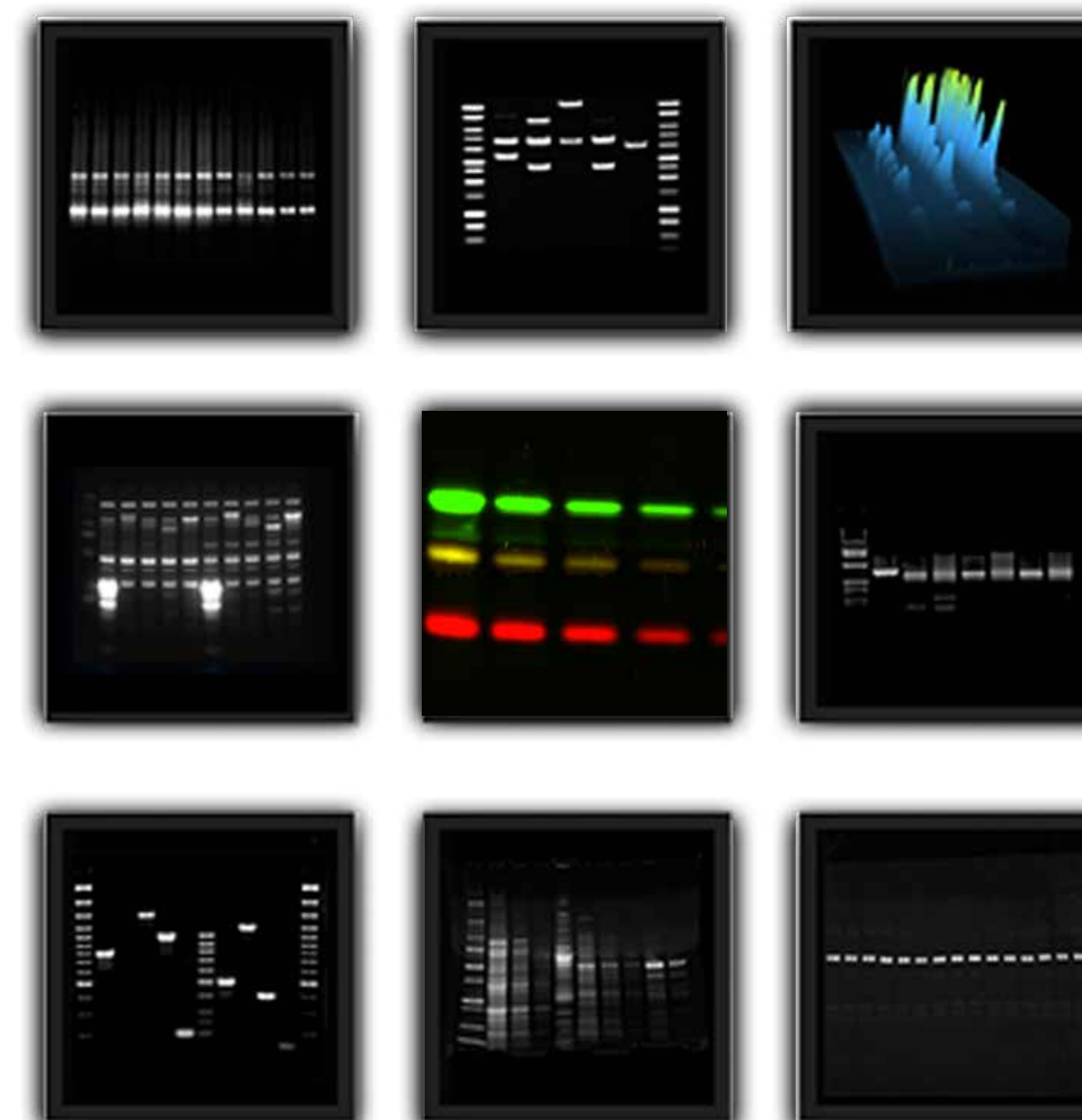
THE NEW GENERATION OF Western Blot Imagers

CHEMILUMINESCENCE & FLUORESCENCE

FOR WESTERN BLOT & GEL DOCUMENTATION IMAGING

- ABSOLUTE QUANTIFICATION & ABSOLUTE CALIBRATION
- ABSOLUTE PERFORMANCE
- HIGHEST SENSITIVITY
- MULTISPECTRAL IMAGING & SPECTRAL UNMIXING TECHNOLOGIES

- Scientific grade 16-bit CCD camera
- Image resolution 10 megapixels
- -65°C | -90°C maximum cooling differential from ambient (FX7)
- Univalles custom made lens f/0.70
- Fully-automatic system
- Automatic visible lighting adjustment
- License free Software with full GLP compliance
- Upgradeability



FUSION FX6 | FX7

High-End Chemiluminescence Western Blot Imager

The perfect choice for chemiluminescence, bioluminescence and UV fluorescence applications

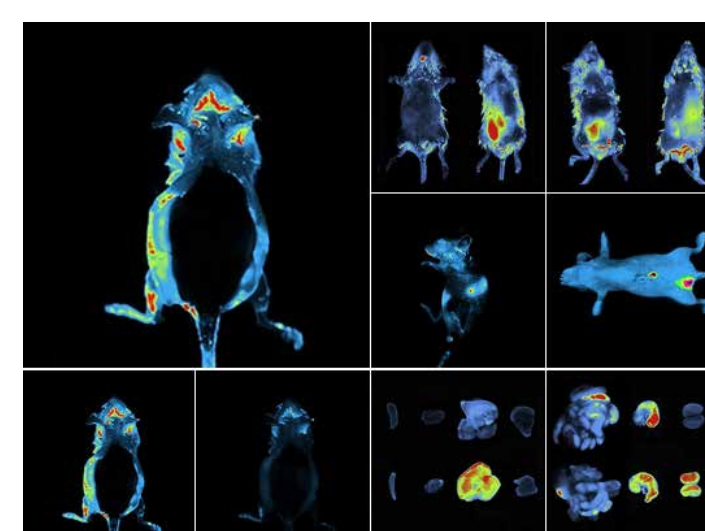
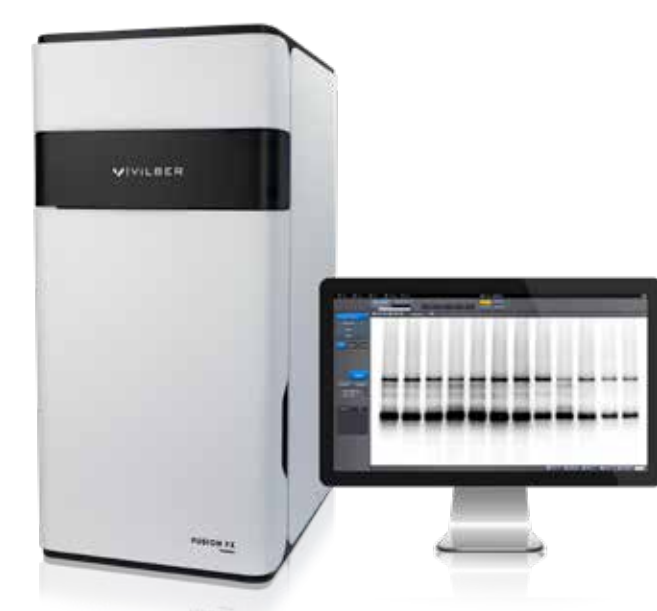
- Unrivalled custom made lens f/0.70
- Scientific grade CCD camera
- Image resolution 10 - 20 megapixels
- -55°C | -90°C maximum cooling differential from ambient
- Dark room
Fully automated, software controlled darkroom with choice of transilluminator for gel documentation or Spectra module for multi-colour fluorescence based applications
- Integrated laser pointer
- Color imaging for molecular weight markers
- CFR21 Part 11 ready
- License free Software
Integrates marker addition, 3-D dynamic scan as well as a complete quantification package
- Upgradeability
System can be upgraded to multi-colour fluorescence applications



Choice between 2 cameras: **EVO-6 camera**, 6.3 MP, -30°C absolute cooling
DARQ-9 camera, 4.6 MP, -65°C absolute cooling

FUSION FX6 | FX7

**DESIGN
YOUR OWN
IMAGING SYSTEM
- at any time!**



END-UP

START

with a FUSION CHEMILUMINESCENCE Imaging System

and run your **Chemiluminescence Western, Northern or Southern blot applications.**

UPGRADE

your CHEMILUMINESCENCE Imaging System with Fluorescence Channels

and cover additionally **multiplexing fluorescence, bioluminescence and chemifluorescence applications.**

INCREASE

the application range of your system with a Transilluminator

and run your **Coomassie and Agarose gel documentation.**

INCLUDE

the BIOSTHESIA MODULE*

and start with **In Vivo applications.**

with **CHEMILUMINESCENCE Western, Northern, Southern blot, FLUORESCENCE** Imaging, **GEL DOCUMENTATION** and **IN VIVO*** Applications.

*Option only for Fusion FX7

MULTI-COLOR FLUORESCENCE

SPECTRA CAPSULES - Multi-Colour Fluorescent Imaging

The Spectra Light Capsules are powerful fluorescence exciters

with focused light for uniform illumination and enhanced power.

Choose Any Possible Wavelength

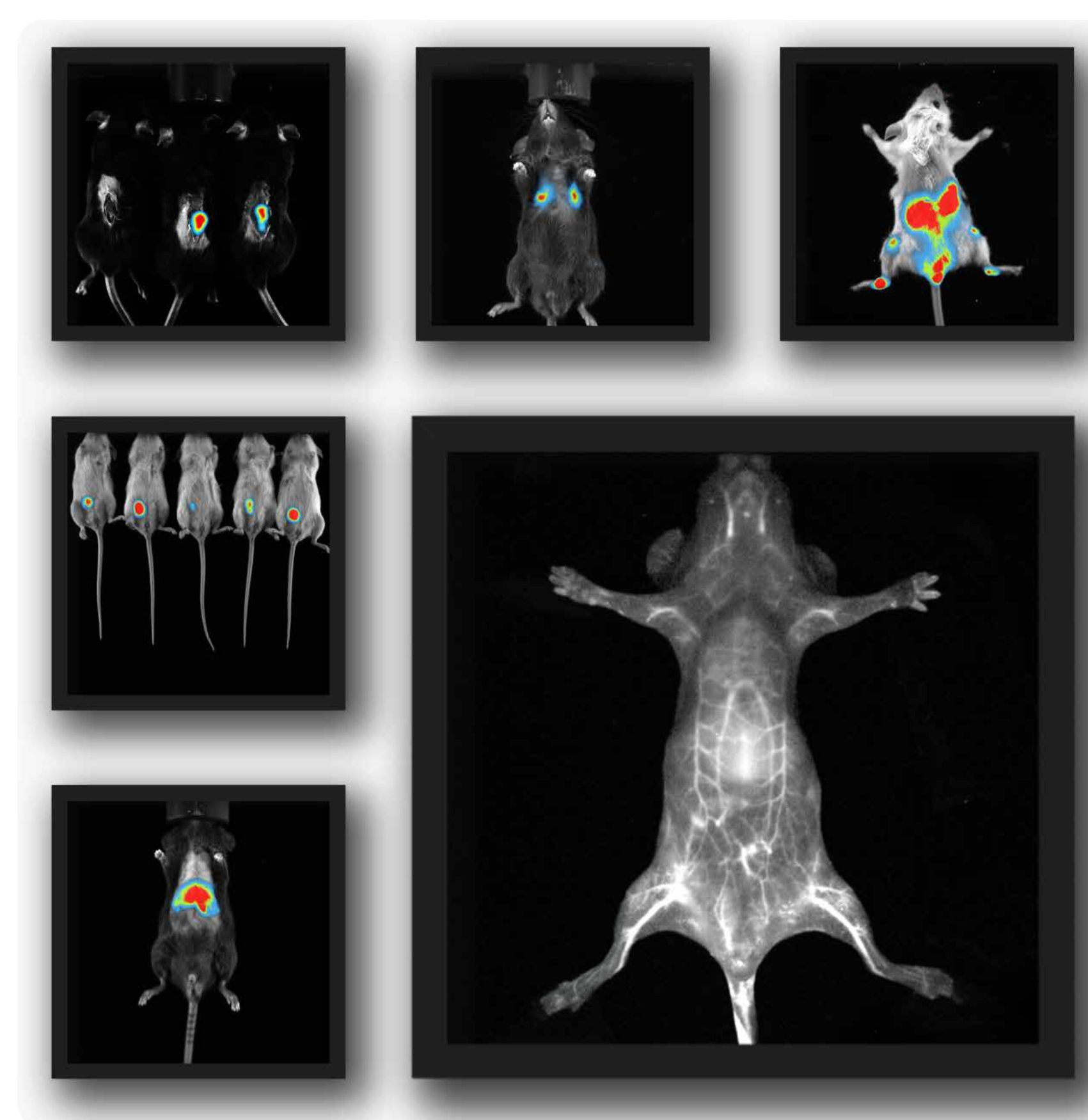
Choose from 8 LED Light Capsules to cover the complete standard spectrum from UV to infra-red. Each Capsule produces a monochromatic light of a different wavelength with a very narrow-band illumination.

Equipped with primary and secondary optics, the Light Capsules are categorized as Laser Class II due to their intense power.



- 365nm, SPECTRA Capsule-UV-365nm
- 440nm, SPECTRA-Capsule-Deep-Blue-440nm
- 480nm, SPECTRA Capsule-Blue-480nm
- 530nm, SPECTRA Capsule-Green-530nm
- 640nm, SPECTRA Capsule-NIR-640nm
- 680nm, SPECTRA-Capsule-680nm
- 740nm, SPECTRA Capsule-IR-740nm
- 780nm, SPECTRA Capsule-IR-780nm

NEWTON FT-900 - IN VIVO IMAGING

BIOLUMINESCENCE & FLUORESCENCE
IN VIS, NIR & NIR-II FOR IN VIVO IMAGING

- **METABOLIC STUDIES**
real-time metabolism such as drug dispersion, heart rate & breathing with SWIR II's high frame rate
- **ALL-IN-ONE SYSTEM FOR ALL YOUR NEEDS**
Tumor and infection monitoring - Cell migration tracking - Molecules to nanoparticles targeting - Vasculature and microcirculation visualization - Biodistribution and pharmacokinetics studies
- **LUCIFERASE EXPRESSION**
Various bioluminescent reporters like firefly luciferase and many fluorescent molecular reagents
- **BLOOD FLOW MAPS**
Obtain deep tissue information such as detailed vascular blood flow maps of mice
- **WIDE COMPATIBILITY**
Rodents (up to 5 mice and 3 rats, guinea pigs, small rabbits) - Zebra fishes - Organs and tissue sections ex-vivo - In vitro samples (in microplates etc...)

DEEP LEARNING POWER

GET YOUR ANSWERS IN ONE CLICK

Infinity - GelDoc System
Upgradeable
to Western Blot Imaging



Quantum - GelDoc System
The Reference
for DNA & Protein



E-Box - GelDoc System
Stand-alone
GelDoc System



Bioprint - GelDoc System
Simplicity &
Performance at a budget



- Upgradeable to Chemi
- Fluorescence Multiplexing
- PadBox Concept
- Ultimate Performance

- One Click to Image™
- App Studio
- HD SuperResolution
- PadBox Concept

- One Click to Image™
- App Studio
- HD SuperResolution
- PadBox Concept

- One Click to Image™
- Free software
- Space Saving
- Scientific USB-3 Camera

SurePAGE™ PRECAST VERTICAL GELS

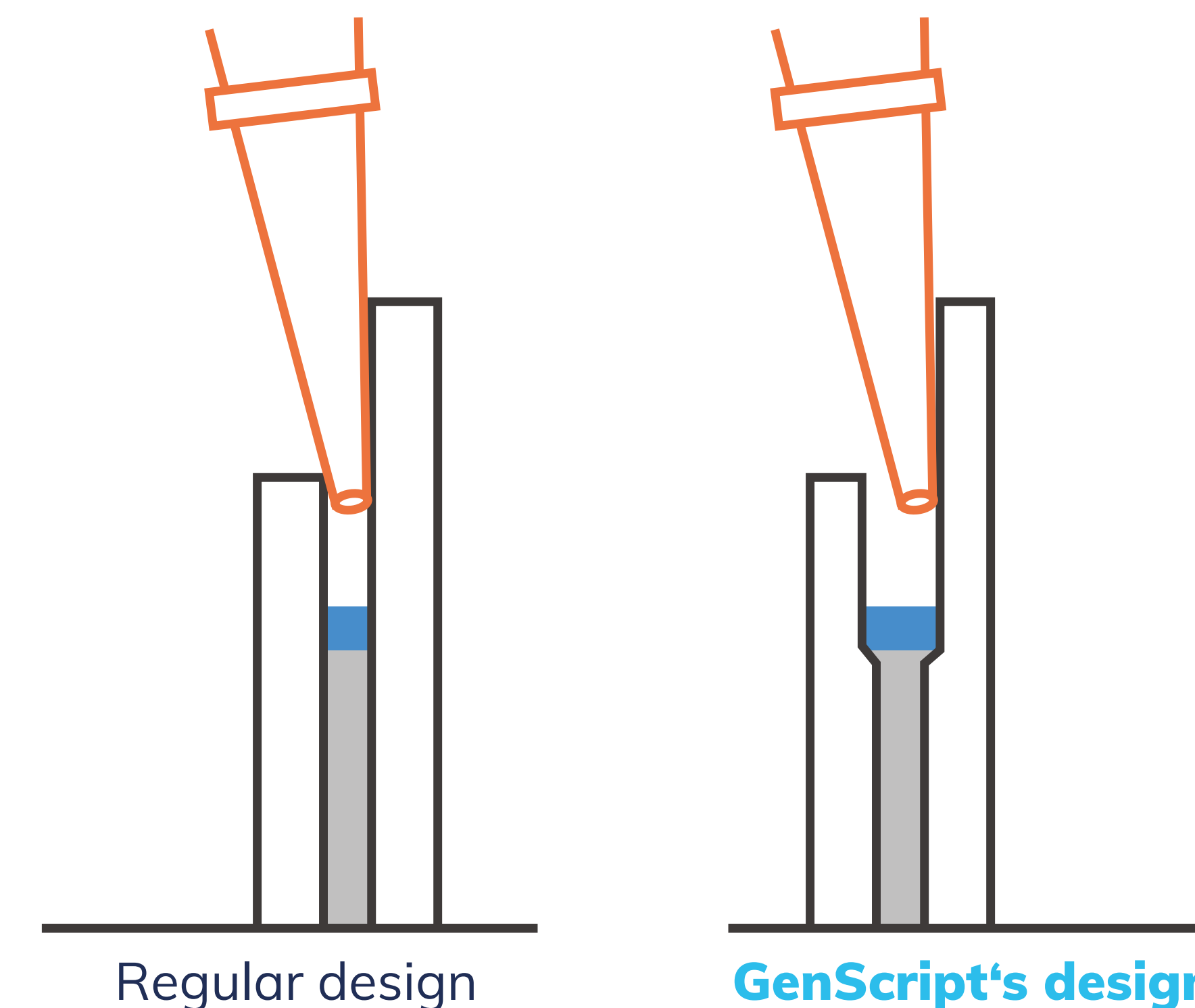


CHF 10.50/gel - w/o buffer
CHF 12.30/gel - incl. buffer

Compatible with **all popular gel tanks!**

- **Large well volume** - up to 80uL
- **Fast run times** - as fast as 20 min.
- **High resolution** - even, sharp bands
- **Compatible** - fits most of gel tanks
- **Long shelf life** - up to 18 months
- **Different** gradients, concentrations & well formats

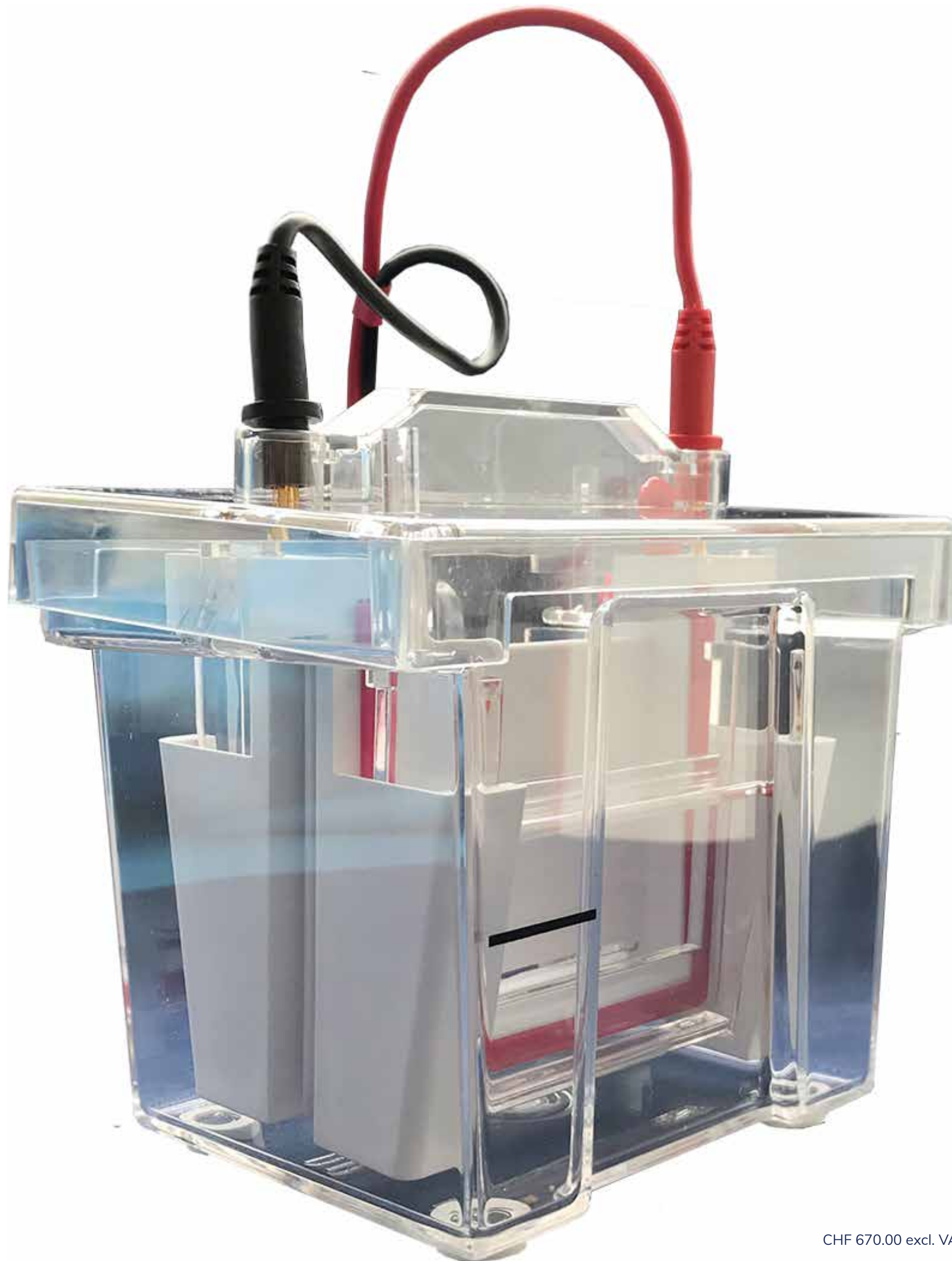
Easy to load... large well volume up to **80 uL**



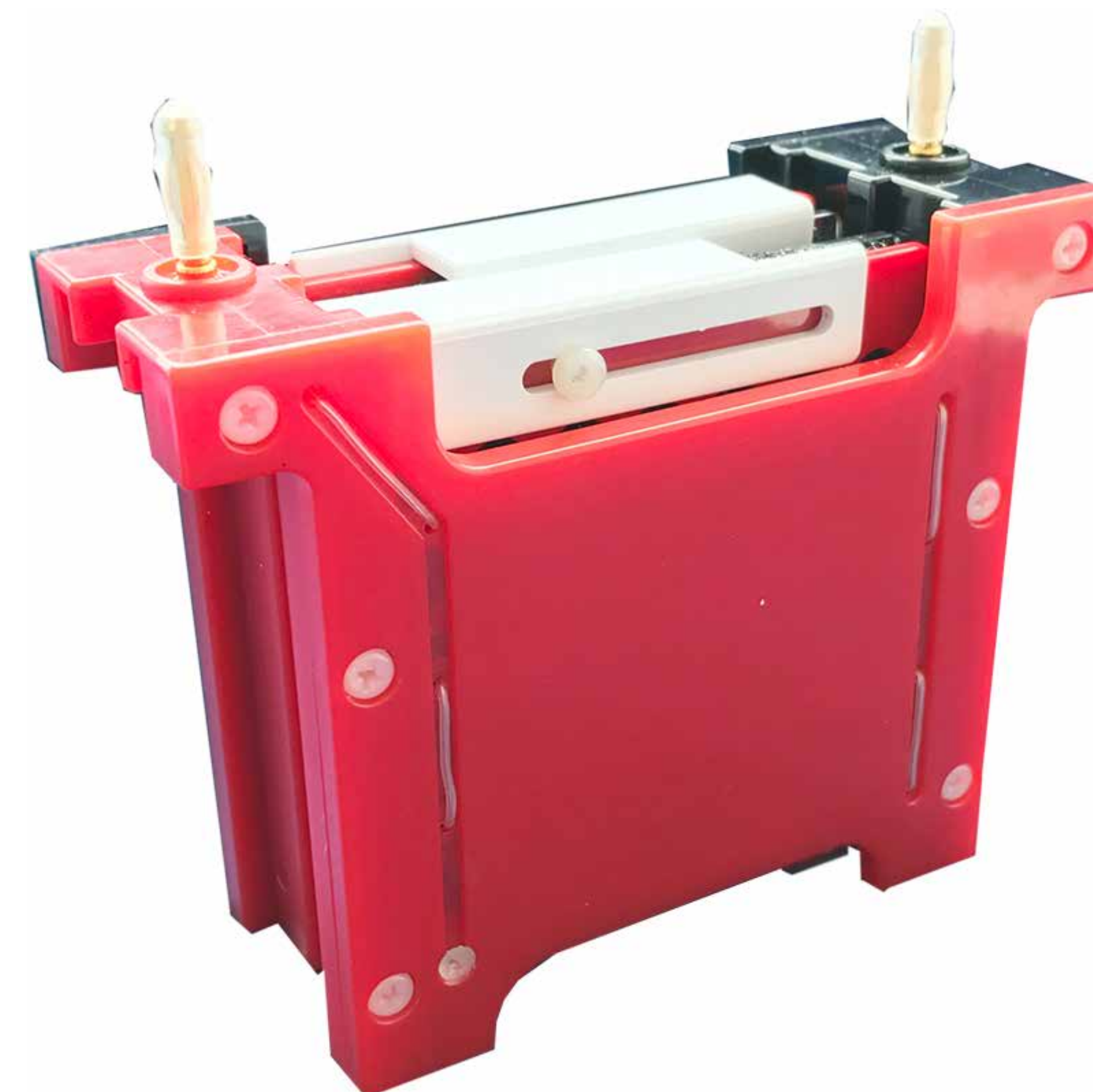
GenBox Mini Electrophoresis tank

Designed to run **1 or 2 mini gels**

- **Robust** - Achieve reproducible protein separation with GenBox
- **Efficient** - Conveniently run and blot your gels in the same tank
- **Flexibility** - Compatible with popular precast gels
- **Convenience** - Run up to 2 mini gels



CHF 670.00 excl. VAT



eStain® L1

10-min Protein Gel Staining
with **ultra-sensitivity & simplicity**



eZwest

Fully automated
Western Blotting System



eBlot® L1

Fast Wet Transfer System
for **Mini Gels**



Automated fast staining



Consistent results



Membrane staining



Easy to use, clean operation



Consistent Results



Antibody **Saving**



Programmable



Completely **Hands-off**



Automated fast transfer



Full **Protein size coverage**



all inclusive consumable kit



High transfer efficiency

Wet transfer in 9-17 minutes

The most sensitive HRP substrates for Chemiluminescence Western Blotting

WesternBright™ ECL



500ml CHF 426.00 | excl. VAT

The best choice

for routine, chemiluminescent Western blots

- **Stronger signal** than other HRP substrates
- **Sensitive** - detect low pg protein amounts
- **Long lasting signal** - up to 6 hours
- **Save money** - use up to 10x less antibody
- **Storage at room temperature**

WesternBright™ QUANTUM



200ml CHF 604.00 | excl. VAT

Sets the bar

for sensitivity and quantitative ability

- **Long lasting signal** - up to 10 hours
- **Handles overloaded protein bands**
- **Sensitive** - detect attomoles of protein per band
- **Quantitative** - linear range of signal with respect to protein amount exceeds 3 orders of magnitude
- **Low background** - for high signal to noise ratio
- **Storage at room temperature**

WesternBright™ ECL Spray

JUST POINT & SPRAY

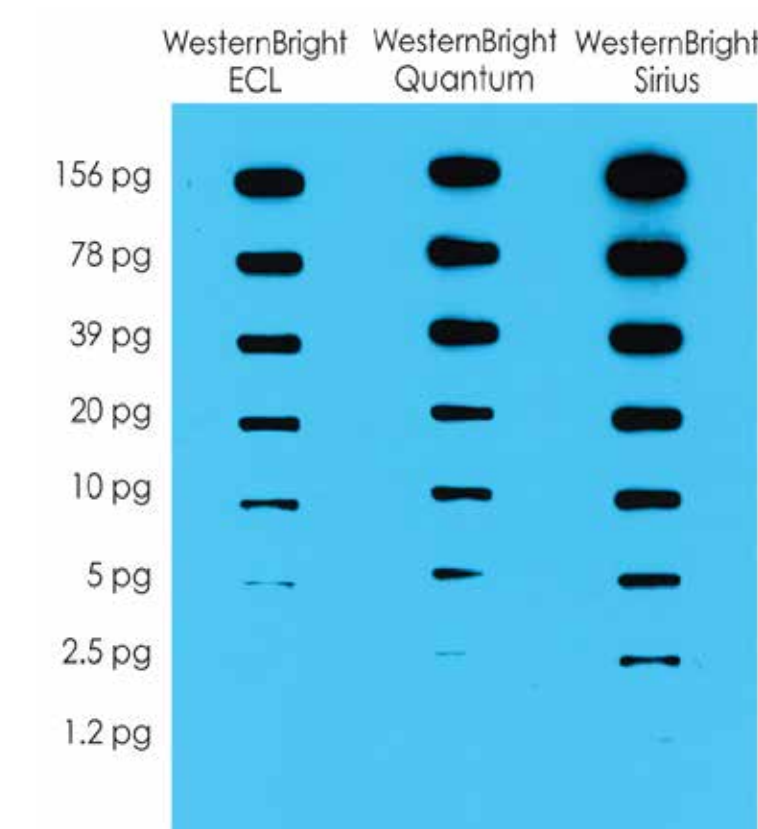


- **No measuring or mixing required**
- **Sensitive** - detect low pg protein amounts
- **Long lasting signal** - up to 6 hours
- **Save money** - use up to 10x less antibody
- **Storage at room temperature**

WesternBright™ SIRIUS

The most sensitive

detects bands not visualized with other substrates



200ml CHF 851.00 | excl. VAT

- **Most sensitive** - for low-abundance proteins
- **Low background** - for high signal to noise ratio
- **Long lasting signal** - for flexible imaging
- **Storage at room temperature**

SAMPLE PREPARATION SYSTEMS

GenePure - Automated Nucleic Acid Extractors

available in 32 and 96 sample format



- **High-throughput processing** of up to 32/96 samples in a single run
- **Fast processing time** - extraction completed in less than an hour
- **Scalable system**, customizable to specific workflow needs
- **Compact system**
- **RUO or CE-IVD** versions
- **Attractive prices**



DNA/RNA Extraction Kits

MagaBio – for automated Nucleic Acid Extraction Systems

Very simple, fast & cost effective technique
to isolate high quality RNA/DNA

from various sample types - available in ready-to-use kits or bottled option

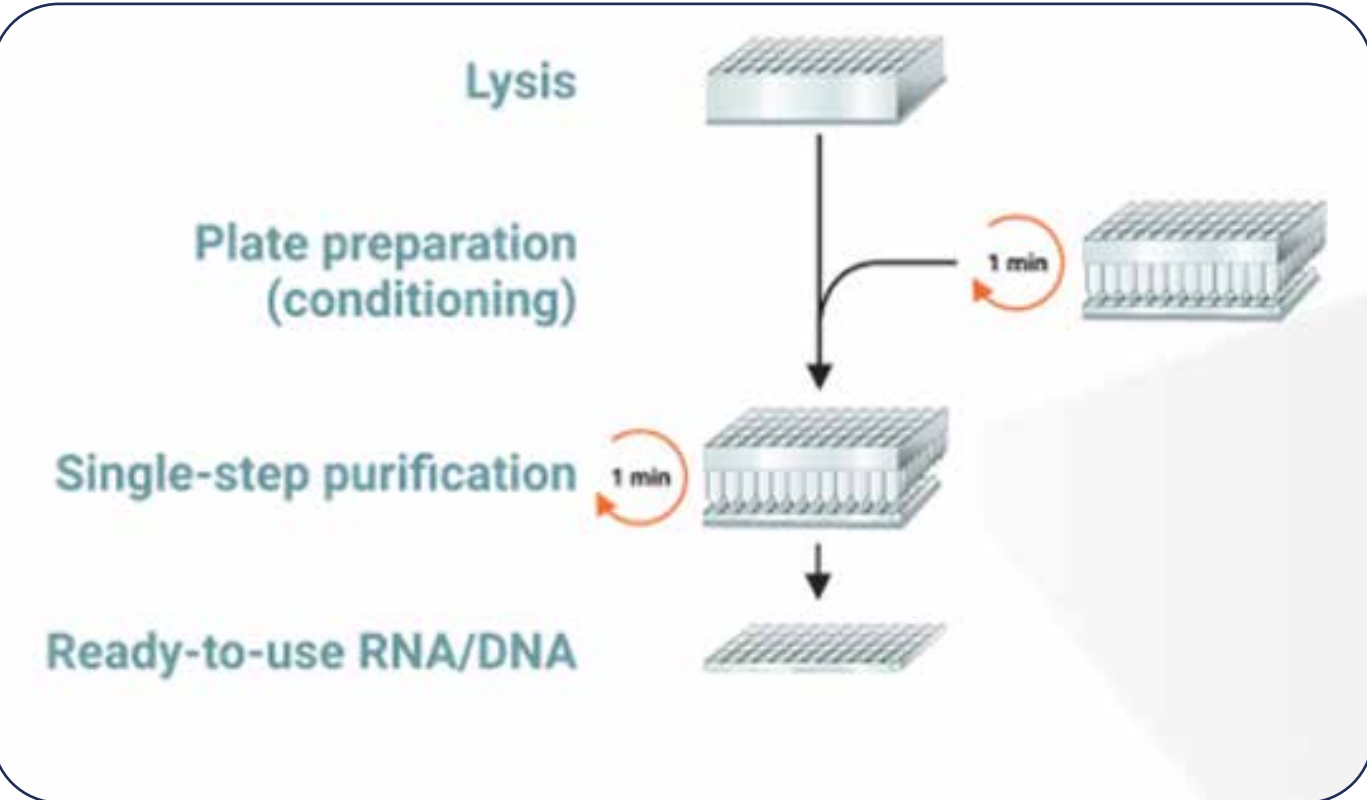
- General gDNA
- Blood gDNA
- Fecal gDNA
- Tissue gDNA
- Virus DNA/RNA
- Pathogens DNA/RNA
- and more



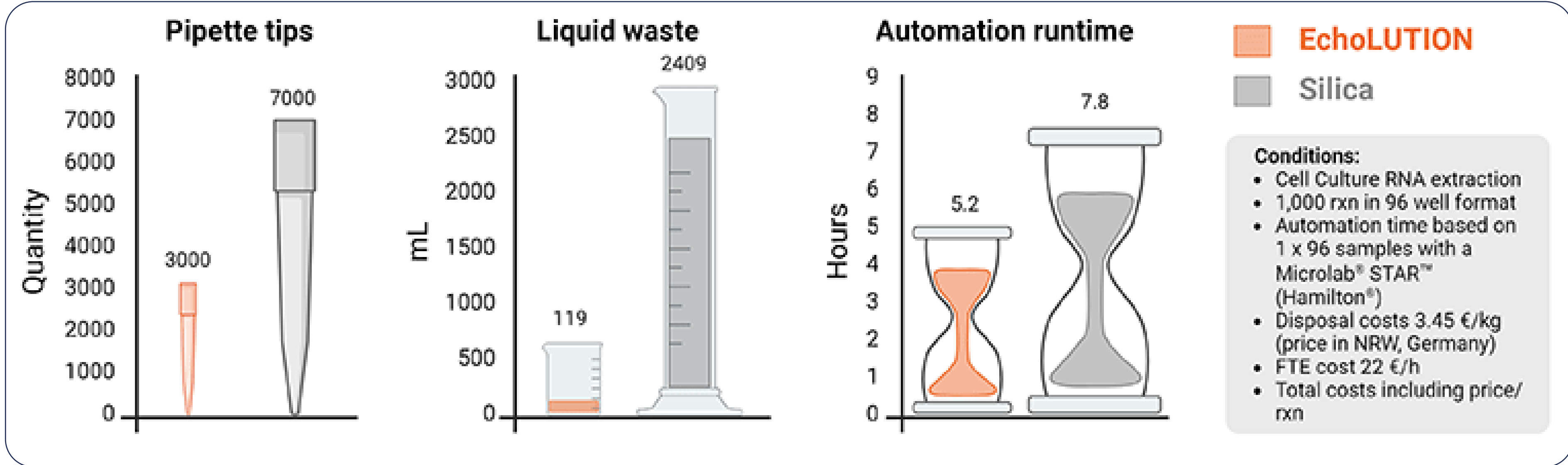


Single-Step Nucleic Acid Extraction

EchoLUTION technology



Bind-Wash-Elute (Silica) method



Kits available in
Spin columns | 96/384 well plates

BioEcho Kits & Reagents

Single-Step Nucleic Acid Extraction

MAXIMIZING EFFICIENCY

Fast & efficient DNA Extraction from FFPE Tissues



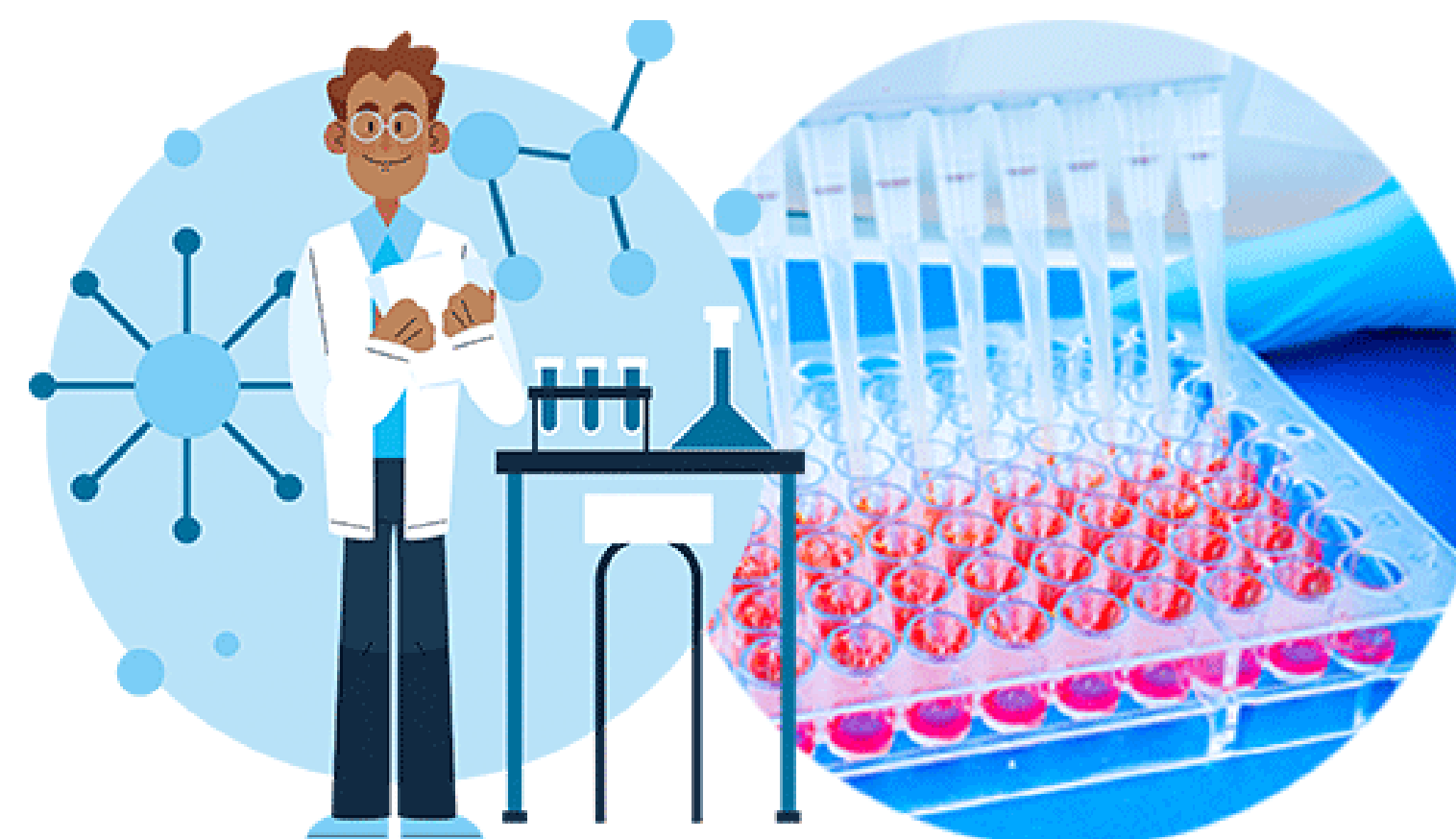
EchoLUTION FFPE DNA or RNA kit

Single-step DNA or RNA extraction
from any kind of FFPE tissue

PHENOL-FREE | 60% LESS WASTE | 3 x FASTER

Get highly pure RNA

free of inhibitors & perfect for downstream applications



EchoLUTION Cell Culture RNA kit

Single-step RNA extraction from various cell types

PHENOL-FREE | 60% LESS WASTE | 3 x FASTER

available in spin columns, 96- & 384-well plate format

Fast lysis & DNA extraction

from various tissue types



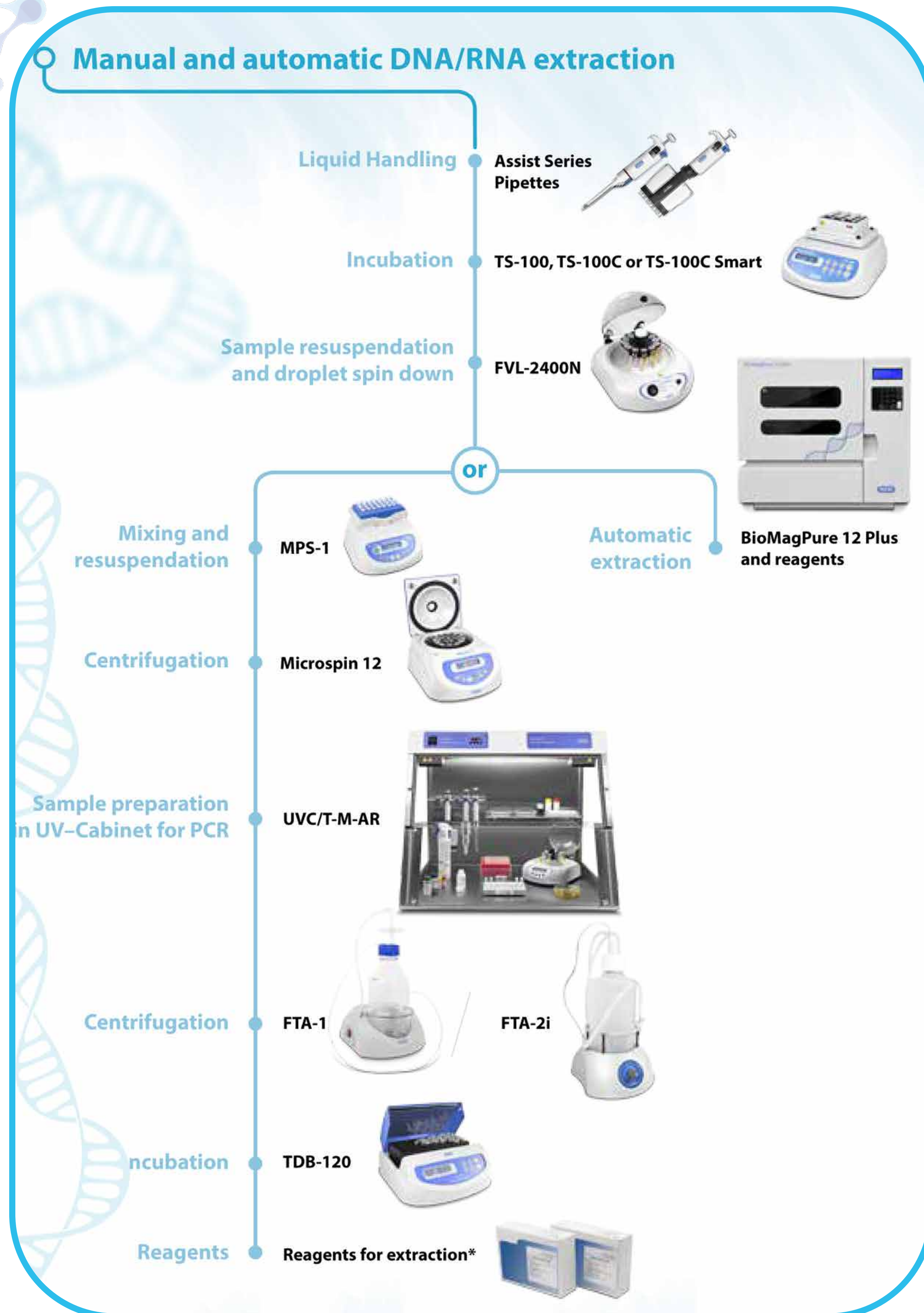
EchoLUTION Tissue DNA kit

Fast and easy extraction of high-purity genomic
& mitochondrial DNA from all kind of tissue

**PHENOL-FREE | 70% FEWER HANDLING STEPS
| 2-10x FASTER LYSIS STEP**

available in spin columns and 96-well plate format

Instruments for **Nucleic Acid Extraction workflow**



CHF 1'260

MPS-1 **High-Speed Multi Plate Shaker**

A compact & user-friendly shaker -
features a head for vortexing a single tube



CHF 3'410

UVC/T-M-AR **DNA/RNA UV-Cleaner Box**

Designed for clean operations with DNA samples -
provides protection against contamination



CHF 580

FTA-1 **Aspirator with trap flask**

Designed for aspiration/removal of alcohol/buffer
from tube walls

Instruments for CELL & BACTERIA CULTURE



ES-20/80C **Orbital Shaker-Incubator cooled**
A professional device -
superior reliability and quit operation



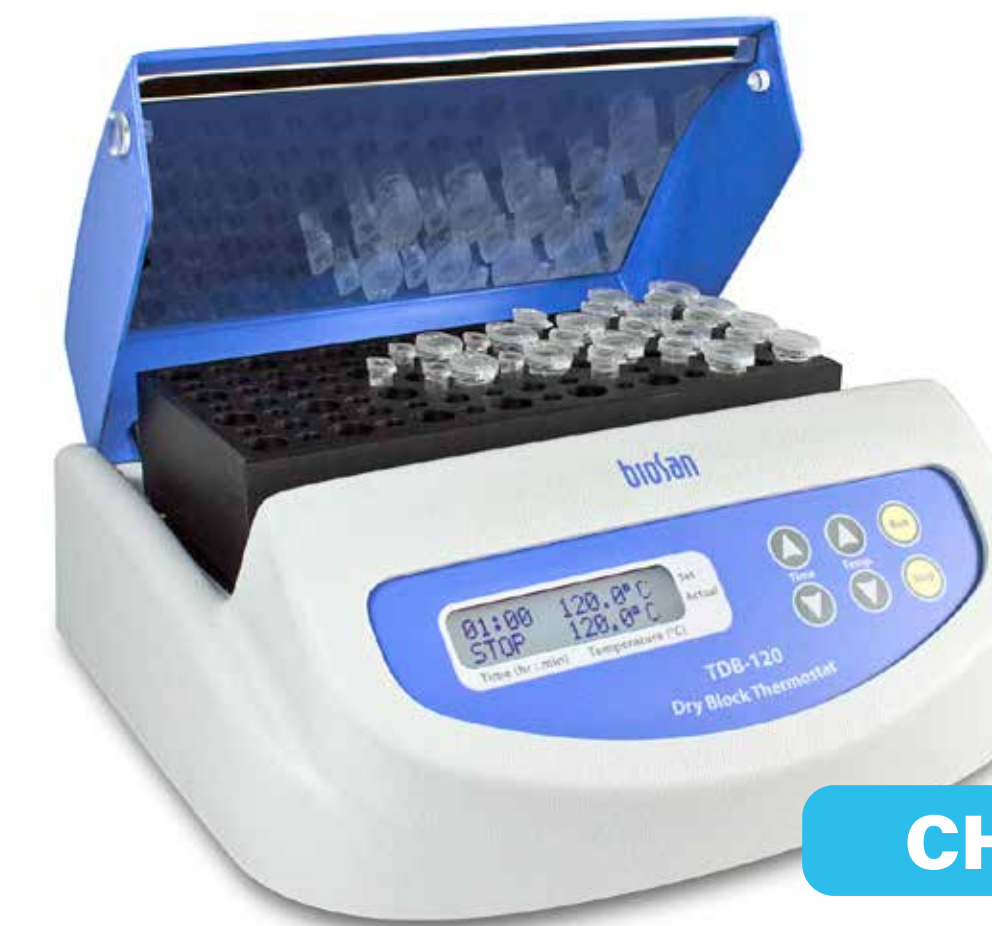
Microspin 12 **High-Speed Mini Centrifuge**
A compact desktop centrifuge -
designed for biomedical laboratories

CHF 1'510



DEN-600 **Photometer**
A compact, portable &
rechargeable battery powered device

CHF 1'160



TDB-12 **Incubator with block**
Designed for maintaining constant
temperatur of samples in tubes

CHF 860

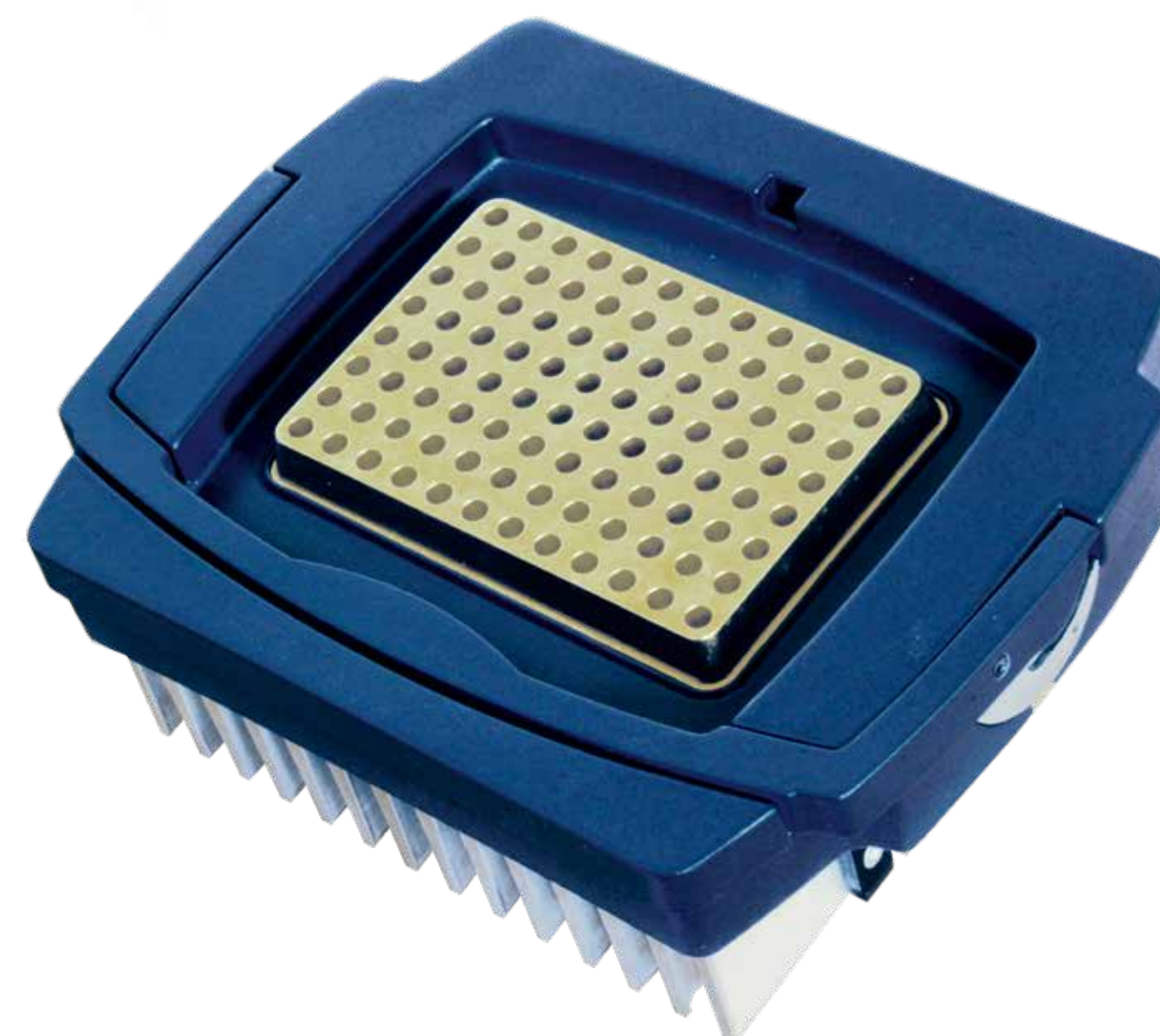


RTS-8 **Multi-Channel Bioreactor**
Personal multi-channel Bioreactor
with non-invasive real-time biomass

LABCYCLER Sensoquest

Thermal Cyclers - **ultra silent & almost unbreakable****5 year warranty**

- **Gold plated silver** & aluminium blocks, exchangeable
- **Outstanding** block temperature uniformity
- **Gradient** capability
- **Motorised lid** with temperature & pressure control
- **Low energy** consumption
- **CE-IVD**



GeneExplorer

Thermal Cyclers - unbeatable prices



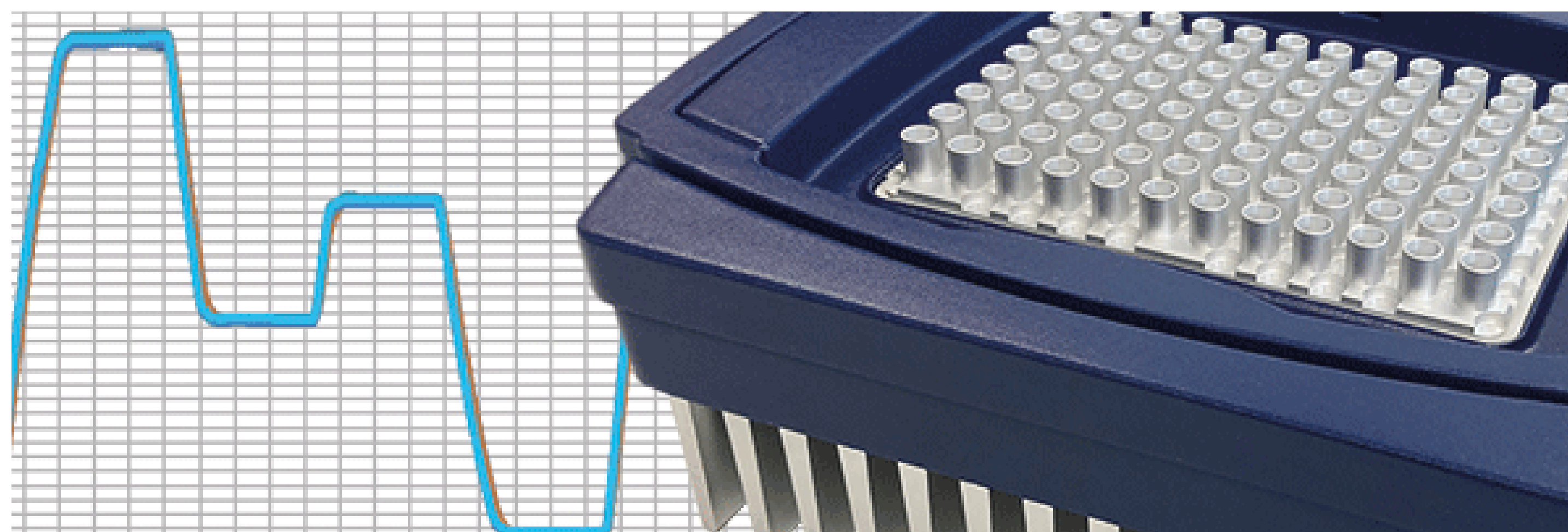
- **Touchscreen** with simple interface
- **Exceptional** temperature accuracy
- **Custom-built** Peltier block
- **Mobile** app

Available models

- **48D** - dual block
- **48DG** - gradient, dual block
- **48DS** - gradient, dual block, 3 independent zones
- **96G** - 96-well, gradient
- **96S** - 96-well, 6 independent zones
- **384** - 384-well, gradient

Temperature Performance Analysis & Validation

of 96-well Thermal Cyclers



EASY, SIMPLY & FAST

The validation is performed by using a dedicated Temperature Acquisition System with 8 temperature probes to perform accurate and dynamic multi-channel temperature measurements. We follow formal, documented procedures.

Simply send us your instrument in our transportation box (sent to you upfront) and get back the

validated instrument incl. certificate within 4 working days.

Endpoint PCR reagents

Outperform competitors

 in yield, specificity, sensitivity, speed and price

Ultra pure, stable, versatile

Premium **dNTP Mix**

0.5mL

CHF 30.00

Highest fidelity enzyme

VeriFi™ **Polymerase & Mixes**

Ideal for cloning, sequencing & site-directed mutagenesis



The most versatile proofreading enzyme

VeriFi™ **HOT START Polymerase & Mixes**

With Aptalock™ hot start technology



For everyday PCR applications

Taq DNA **Polymerase & Mixes**

200 reactions

CHF 98.00

Industry-leading enzyme

HS Taq DNA **Polymerase & Mixes**

Best for low copy viral templates or high-throughput assays



Engineered to tackle difficult templates

Ultra **Polymerase & Mixes**

For GC-rich templates or low in abundance



Pfu-derived high fidelity enzyme

HiFi **Polymerase**

200 units

CHF 140.00

Highly purified recombinant Taq DNA Polymerase

Classic **Taq**

For everyday PCR applications



Column-free | Fast | Convenient

PCR BIO Rapid Extract PCR

Produces PCR-ready DNA in as little
as **15 minutes**

1rx

CHF 0.93

Ready for immediate gel loading

PCR BIO **DNA Markers**

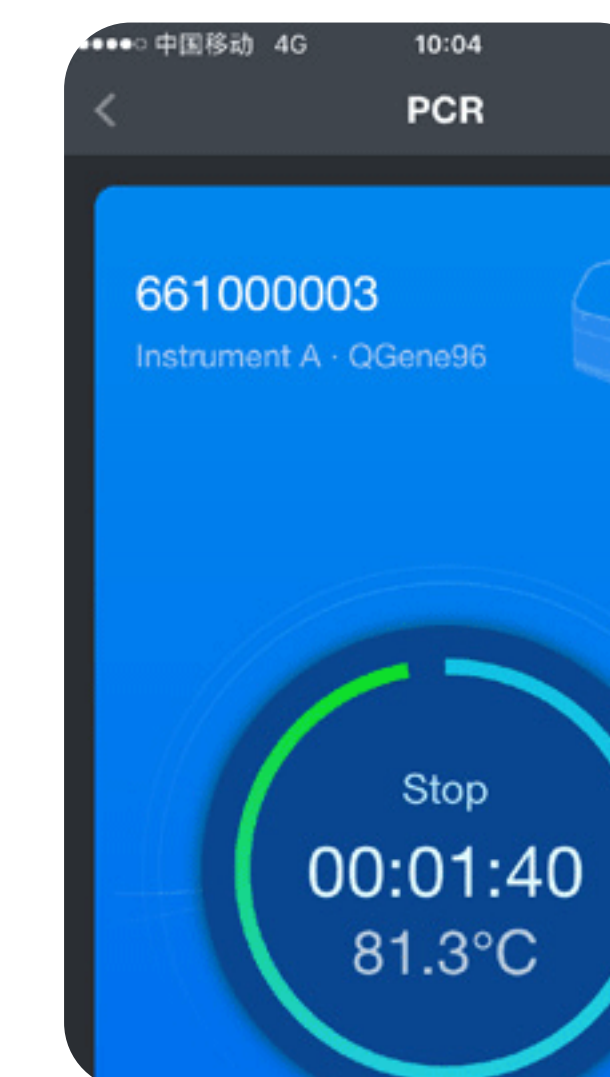
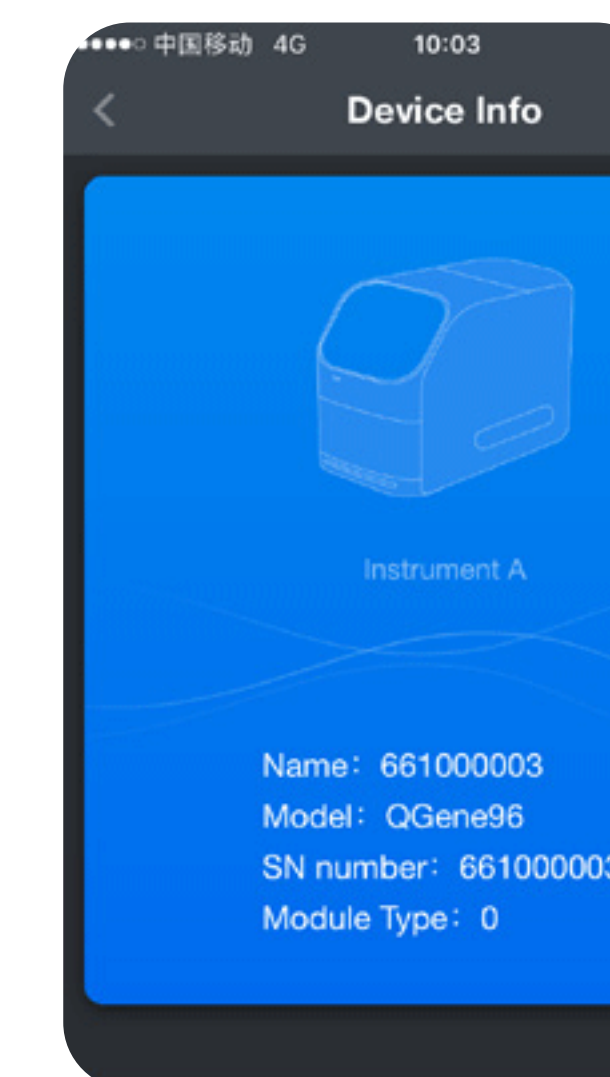
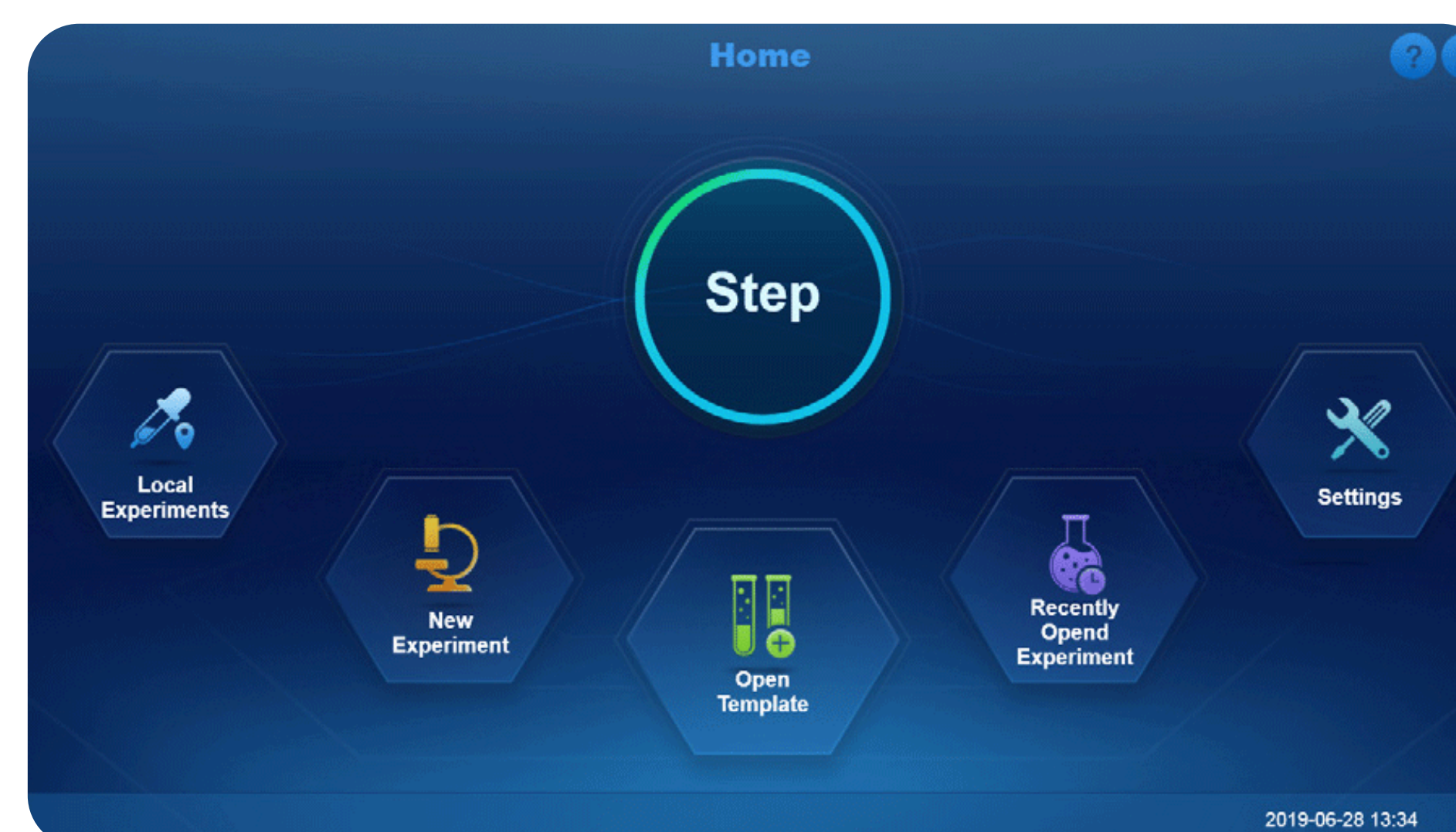
100 lanes

CHF 38.00

QuantGene 9600 - Fluorescence Quantitative PCR Detection System

Real-Time PCR system - unbeatable price up to 6 channels

- Easy-to-use, intuitive software
- Large built-in touch-screen and/or PC control
- Up to 6 channels
- Top imaging photoelectric detection for precise analysis
- 6 partition thermal cycling module for faster reaction speed, temperature uniformity, and ramping speed
- Full adaptable software system with phone/tablet app for remote operation and real-time monitoring



Real-time PCR reagents

Outperform competitors

 in yield, specificity, sensitivity, speed and price

Fast & highly sensitive SyGreen qPCR Mixes

- Engineered polymerase for high processivity with **hot start technology**



Ready-to-use & specifically designed Clara™ qPCR Kits

- Optimized for high reproducibility & **maximum sensitivity**



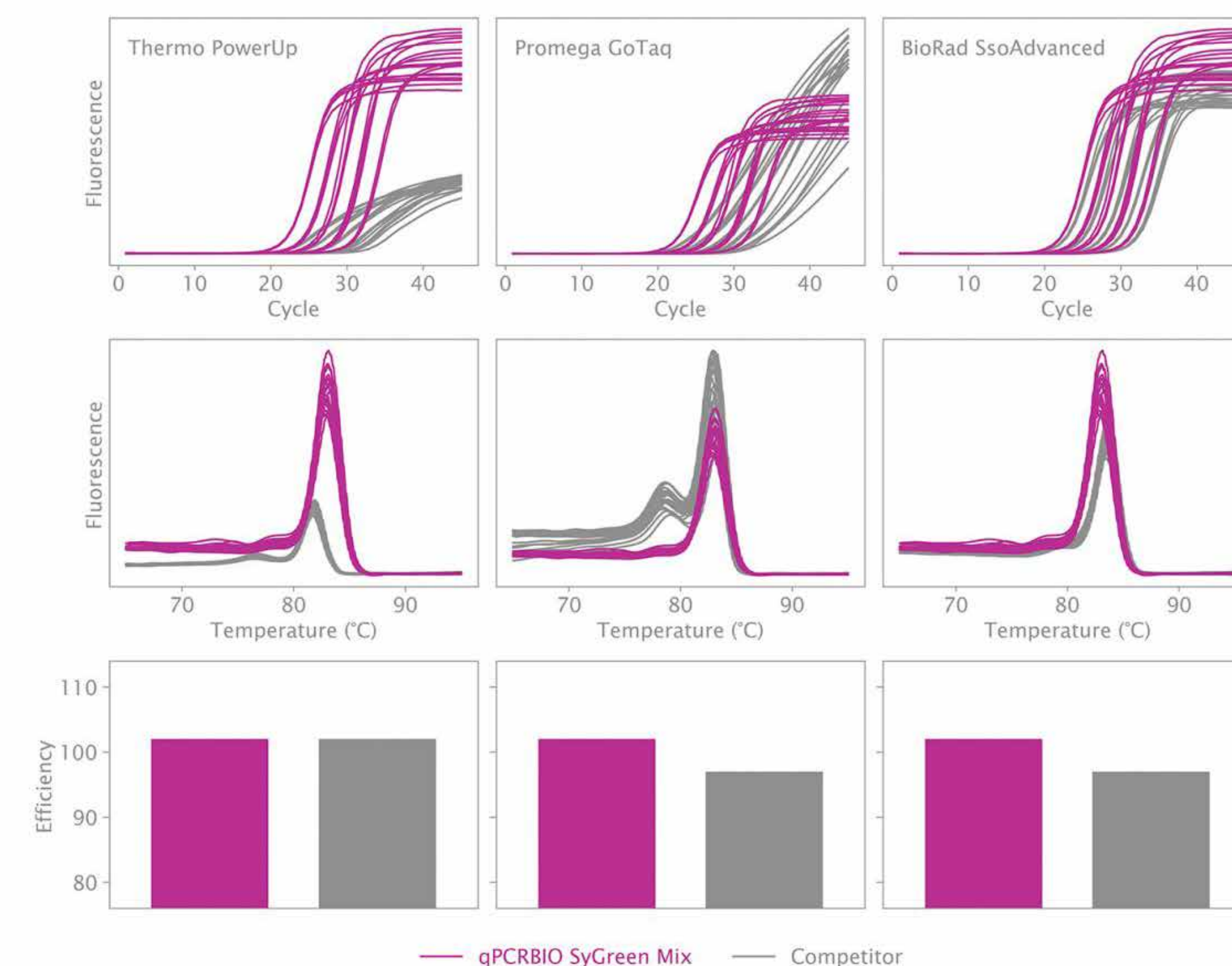
The robust choice Probe Mix & Blue Mix

- Universal kit to detect **extremely low copy number targets**



For tough RNA samples UltraScript 2.0 cDNA Synthesis Kit

- Denature RNA at high temperature
- **up to 65°C & above**



DNBSEQ-E25 Portable Sequencer

Sequence Your Samples **On-The-Go**

From Sample-to-Report in One System

- a compact, standalone system that can be used inside or outside the lab – anywhere

Reads	Read Length	Data Output	Run Time	Q30
25M	SE100	2.5 Gb	5 hr	>90%
	PE150	7.5 Gb	20 hr	>80%

SOON
available

Data Analysis Has Never Been Easier

DNBSEQ-E25 also comes with an advanced model, DNBSEQ-E25A, which includes an enhanced computing module that can run data analysis for whole-genome sequencing and other applications.

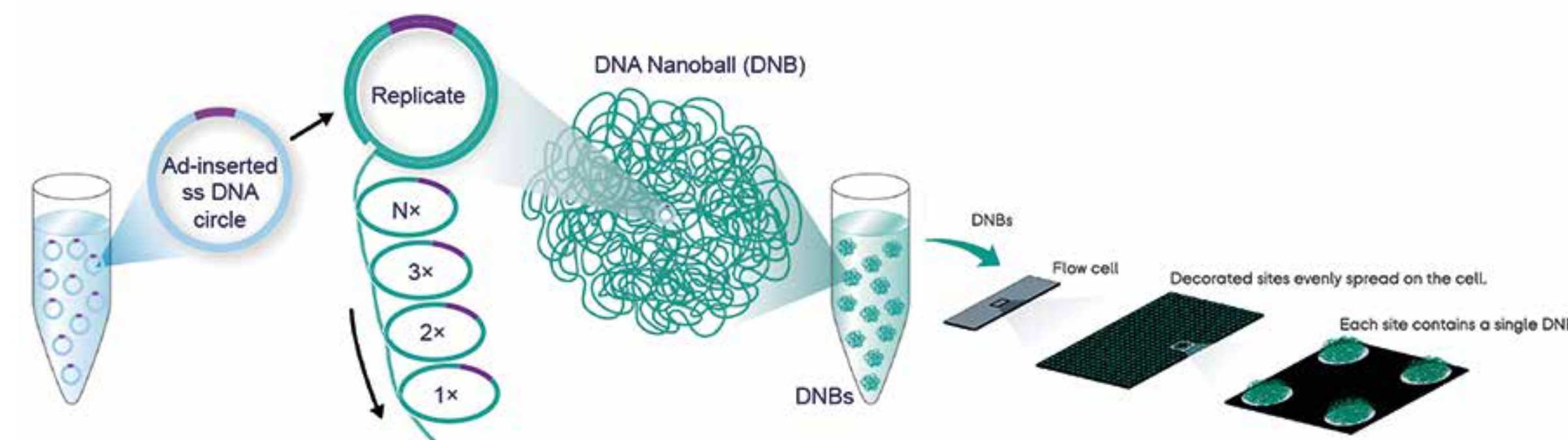


High-quality DNB sequencing

DNB sequencing - starting below CHF 5 / gigabase

DNA Nanoball Technology

no accumulation of amplification errors

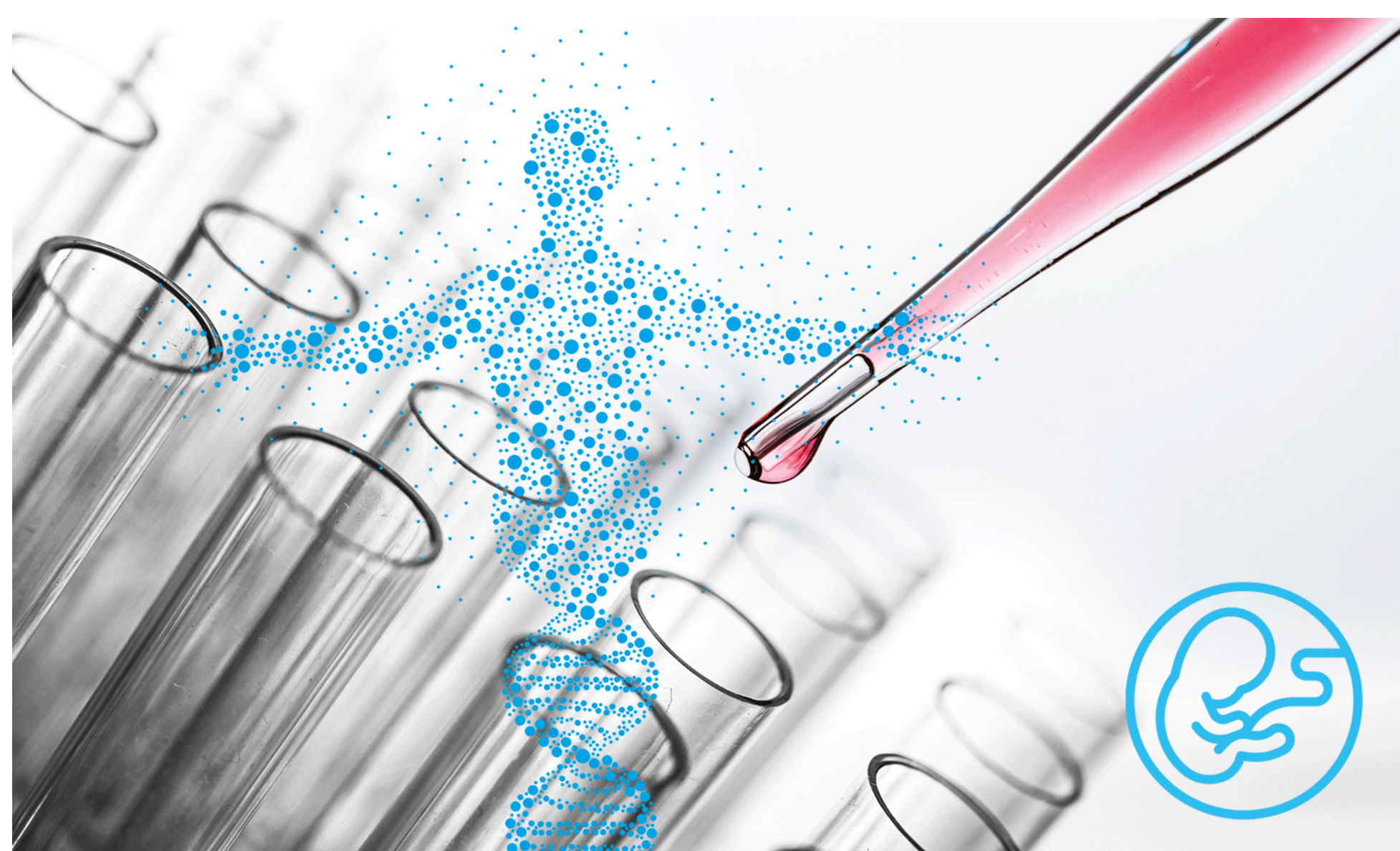


- ↑ INCREASED ACCURACY
- ↓ DECREASED DUPLICATES
- ↓ REDUCED INDEX HOPPING



Diagnostic Kits

NIPT | OncoClever | HubExome



NIPT - GeneSGKit Advanced CE-IVD

Non-invasive prenatal screening
for chromosomal aneuploidis

NIPT-GeneSGKit® Advanced allows detection of chromosomal abnormalities in the fetus at an early stage of the pregnancy, as well as the gender of the fetus using a sample of maternal blood. It examines all the chromosomes.



OncoClever-GeneSGKit - CE-IVD

Reliable & efficient analysis of point mutations, indels, ALU insertions and CNVs

This kit provides reliable and efficient analysis of point mutations, indels, large indels, ALU insertions and CNVs associated with the diagnosis of germline oncological pathology of heterogeneous origin.



HubExome Plus Panel - GeneSGKit® - CE-IVD

Single kit for the study of all human pathologies from whole exome capture and mitochondrial DNA

Captures all exonic regions of the genome (>19000 genes), flanking regions (+/- 20 bp) and mtDNA with a compact size of ~ 40 Mb.

SAMPLE PREPARATION SYSTEMS

Automated and efficient platforms

MGISP-100
DNA Sequencing Library
Preparation System

● 96 samples | 60 min.



MGISP-960
High-throughput
Automated Sample Preparation System

● 192 samples | 80 min.



MGISP-SMART 8
Professional
Independent 8-channel Pipetting Robot



LeviCell System



Any size, any type of cell

- Compatible with any sample source, cell type, and cell media
- Scalable to large cells, clusters, and organoids
- Unaffected by cellular and extracellular debris



Untouched & label-free

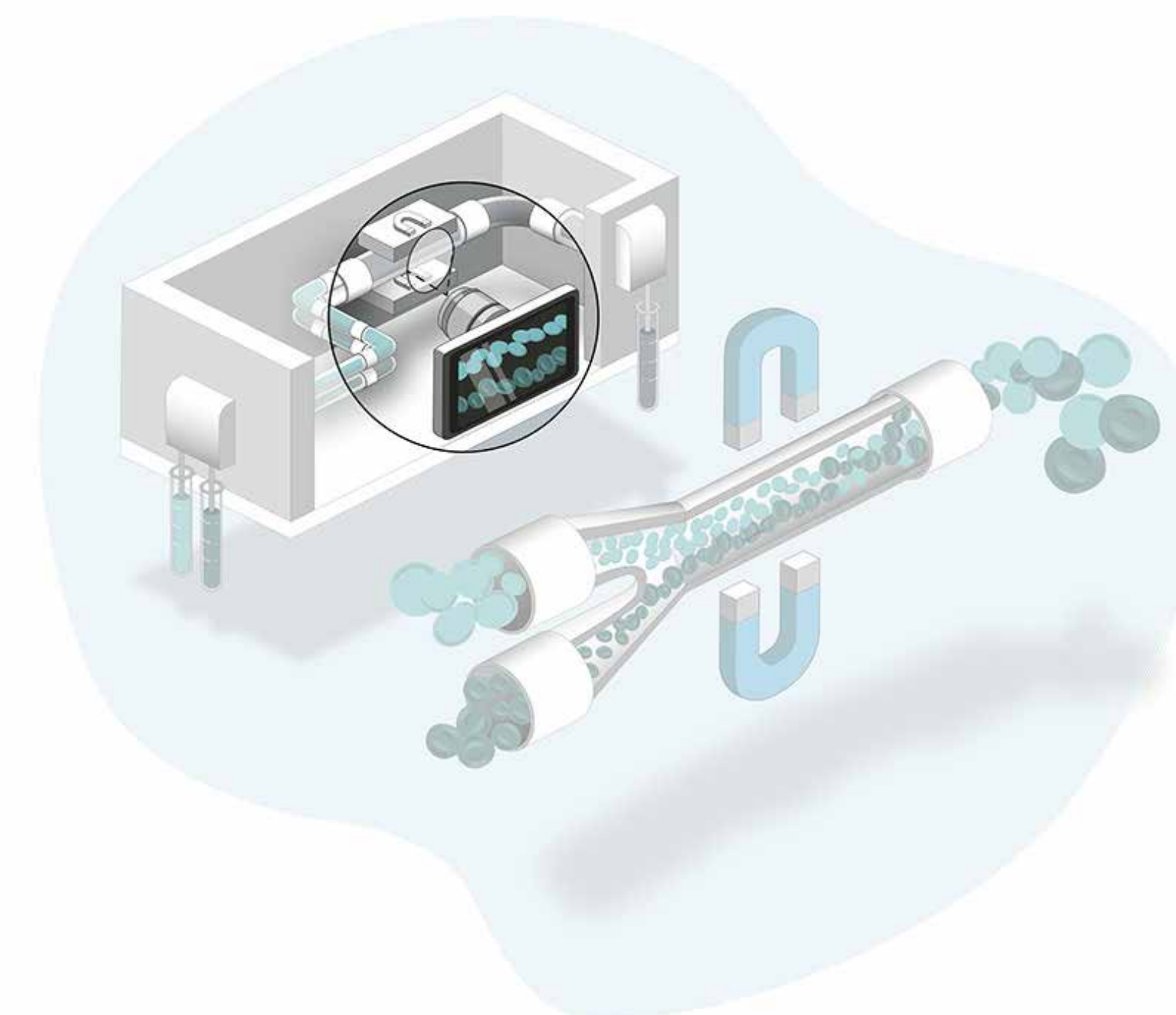
- No dyes or labels of any kind required
- Low pressure, minimal cell stress
- Limited cell activation and expression profile distortion



Simplified workflow

- Simple 15 minute, three-step procedure
- No additional sample prep, purification, or debris removal required
- Run-to-run reproducibility without calibration

Cell Isolation & Enrichment **in minutes.**



Moxi Automated Cell Counter

Produce repeatable cell counts with >95% accuracy **in Seconds**

Moxi Z

Automated Cell Counter

The Coulter principle based Cell Counter



Moxi V

Gold Standard Cell Counts, Cell Size & Viability

Uniquely powerful combination of Coulter Principle cell sizing with simultaneous red fluorescence measurements.



Cell Counters

Smart Cell Counting **in Seconds**

EVE™

Automated benchtop
Cell Counter



Cell count and viability (live, dead, and total cells),
using the standard trypan blue technique.

- Less than 20 sec to get results
- Easy operation and accurate results
- Fine distinction of clumped cell / cell size gating
- Bench top size & LCD touch screen

ADAM MC2

Sensitive Fluorescence dye staining
Cell Counter



**The perfect solution for aggregated,
irregular-shaped or challenging cells.**

- Stem cell
- CAR-T cell
- CAR-NK cell
- Adipose-derived stem cell

EVE PLUS

Image based Automated
Cell Counter



**Counts your cells in
less than 1 second.**

- Count less than 1 second
- Manual and Auto focus function
- Count aggregated cells individually
- Trypan blue staining method
- Easy to use

ADAMII LSImage-based fluorescence **Cell Analyzer**

Benchtop fluorescent intensity based cell analyzer
providing versatile assays and high accurate results
(similarity to flow cytometer).

- **Bright field and 3 fluorescence channels (GFP/RFP/DAPI)**
- **Fluorescence level / Transfection efficiency / Protein expression**
- **Cell cycle**
- **Apoptosis**
- **Total cell counting / Viability / Cell size**
- **Dot plot**
- **21 CFR part 11 compliance for GMP**

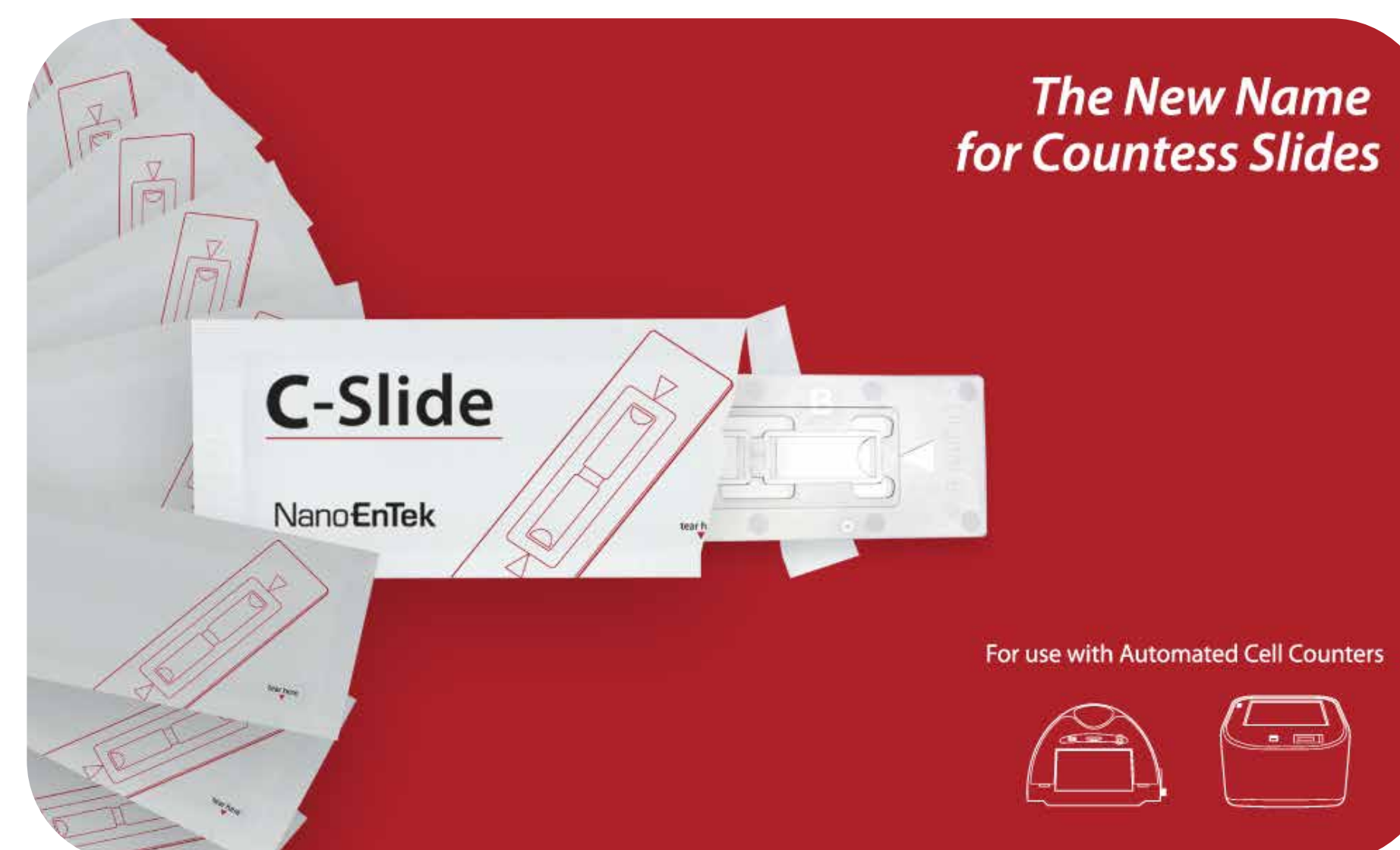


C-Chips 2 & 4-channel Hemocytometer



100/200 tests
CHF 150/244

COUNTLESS C-Slides Cell counting slides



50 slides
CHF 96

EVE™ Slides Cell counting slides



50 slides
CHF 88

Developed to solve the problems
of conventional glass hemocytometers

- Coverslips not required
- Washing & reuse time eliminated
- Two / four test per slide

Compatible with
Countess cell counters

- Chamber volume 10 μ L
- Staining method: Trypan blue

Offer reproducible & reliable
measurements & analysis

- Chamber volume 10 μ L
- Staining method: Trypan blue

ES-20/80 | ES-20/80C

Orbital Shaker-Incubator | cooling



starting @
CHF 7'070

Mixing | Shaking | Incubation
in a variety of flasks & vessels

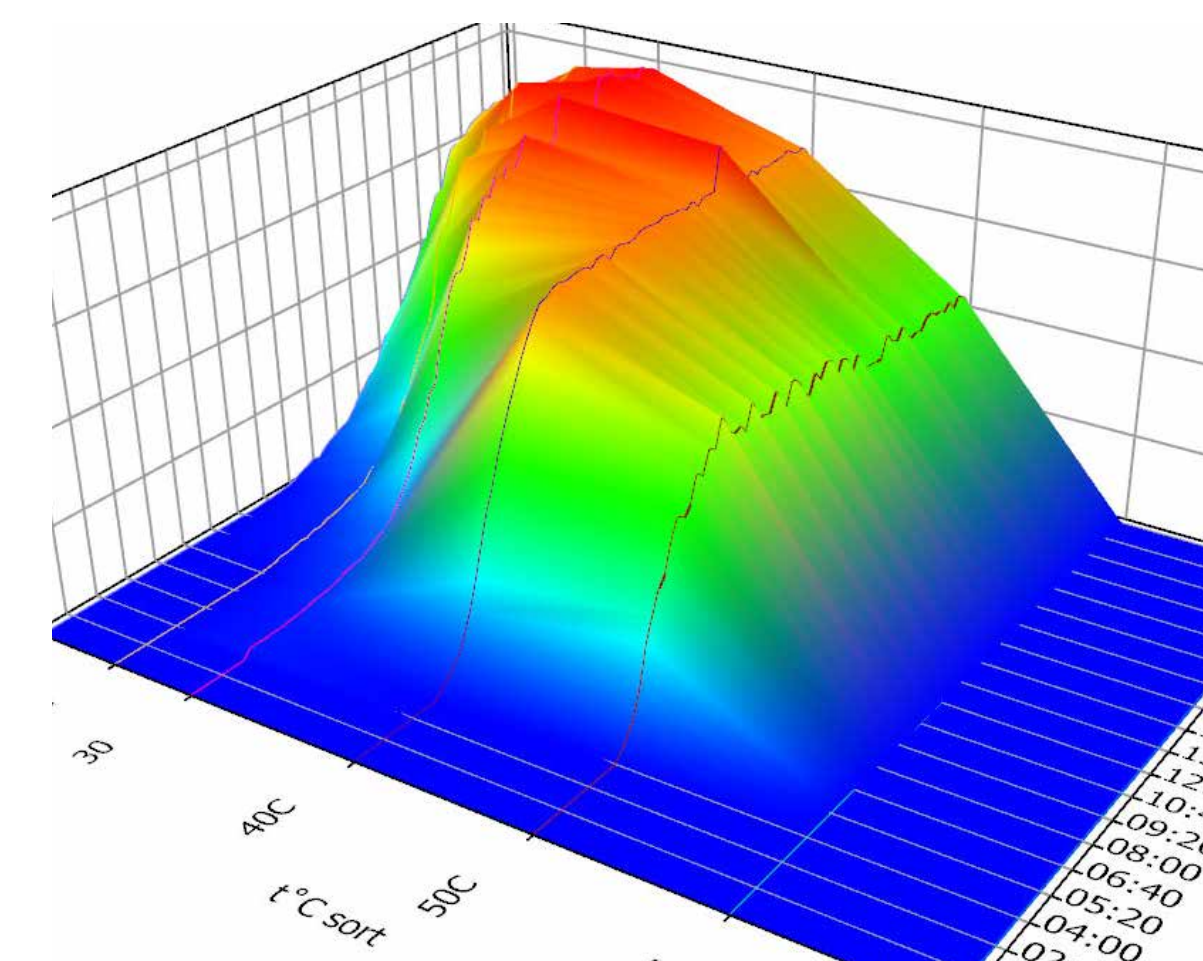


RTS-1 | RTS-8 PLUS
Bioreactors



Personal | Multi-channel

Fermentation real time growth kinetics & more



RTS-8 PLUS Features

- Remote monitoring
- Cell growth kinetics
- Real-Time cell growth logging
- Real-Time pH & O₂ measurement & logging

CELL & TISSUE CULTURE PRODUCTS



Cell & Tissue
Culture Flasks



Cell & Tissue
Culture Dishes



Cell & Tissue
Culture Plates



Tissue Culture
Plate Inserts



CellATTACH®
Cell/Tissue Culture



Erlenmeyer
Flasks



Bio-Reaction
Tubes



Culture
Tubes



96-well detachable
Flat Plates



CellIDETACH®
Thermosensitive
Cell Culture Surface



CellISCAFLD® 3D
Cell Culture Scaffolds



Confocal
Dishes



CellISLIP®
Coverslips



Cell
Strainers



Pestles
for Cell Strainers

BC43 - The Ultimate Benchtop Confocal Microscope

High-Speed Confocal Imaging for Biologists

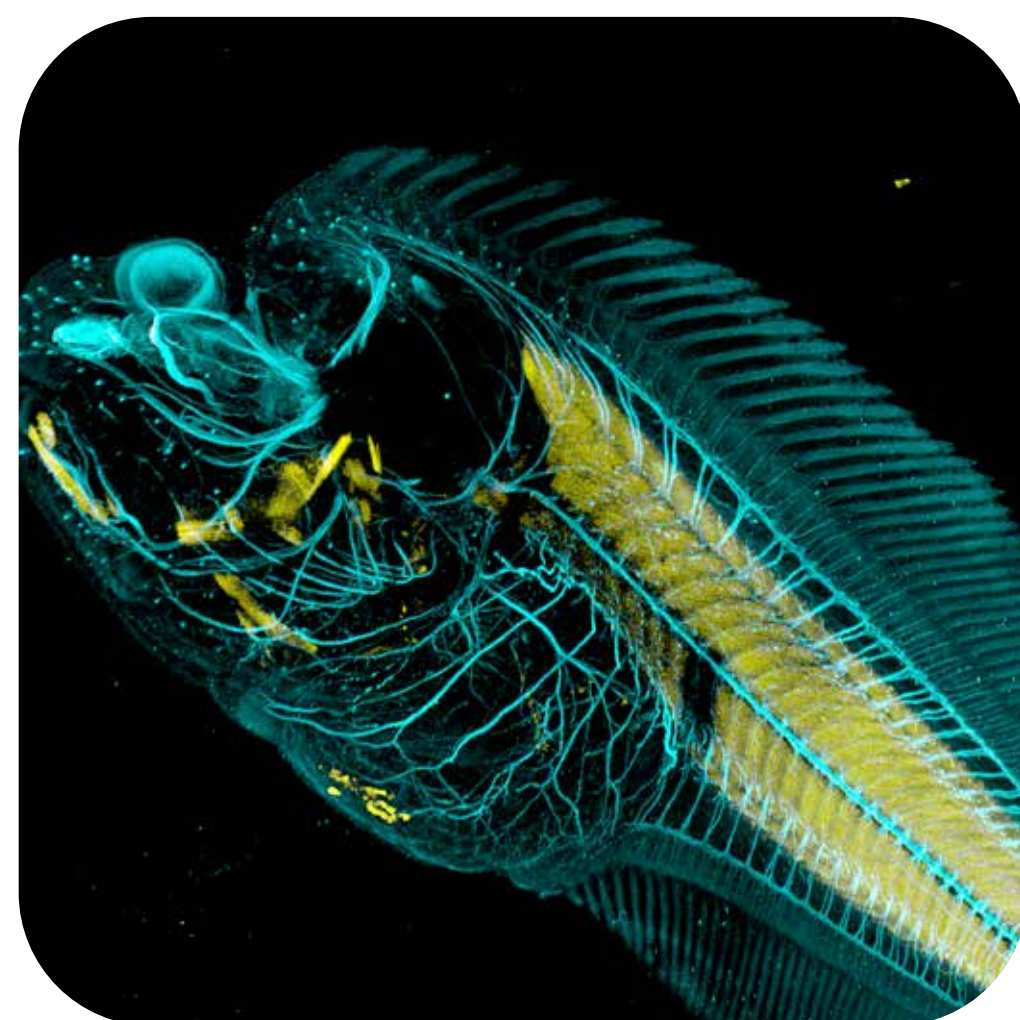


Key Features

- Benchtop multimodal imaging system
- Instant confocal: Blur-free imaging
- Widefield imaging
- Differential phase contrast & brightfield
- Borealis uniform illumination
- GPU-powered deconvolution

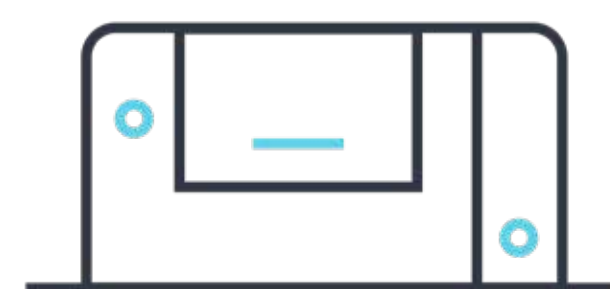
Key Applications

- Cell biology
- Development biology
- Neuroscience
- Cancer biology
- Tissue imaging
- Organoids & large organisms



Nicoya OpenSPR

In-depth label-free binding kinetics & affinity data - **within 1 hour**



Benchtop



User-Friendly



Real-Time Data



Low-Maintenance

Applications

- Kinetics/affinity characterization
- Concentration analysis
- Yes/No binding
- Competition assays
- Epitope mapping

Compatible with

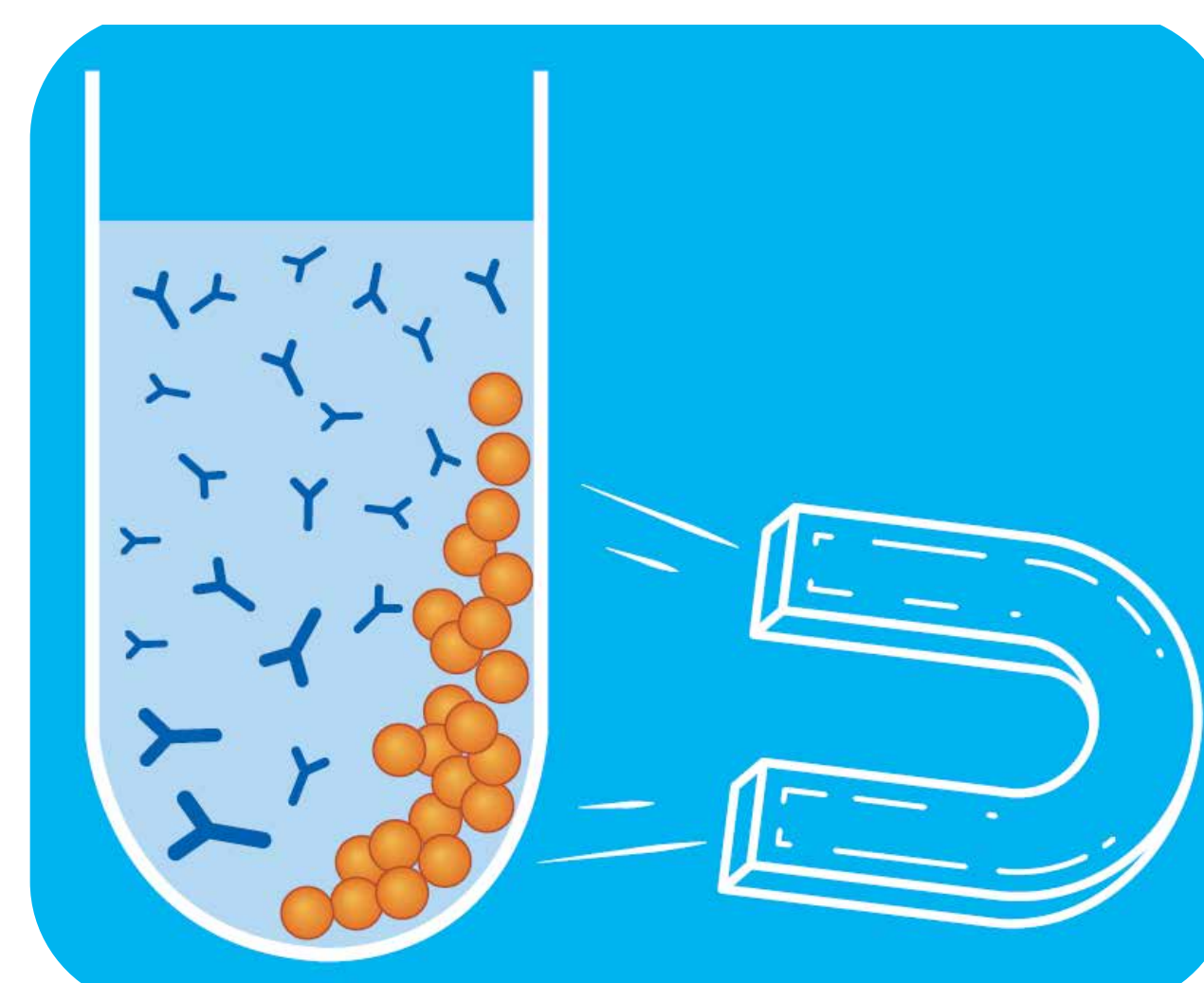
- Proteins
- Peptides
- Antibodies & variants
- Nucleic acids
- Lipids
- Adeno-associated viruses (AAV)
- Virus-like particles (VLPs)
- Hormones/cytokines
- Small molecules

AmMag™ SA - semi-automated Magnetic Bead Purification System

Redefine your **Purification workflow**

High-throughput purification

- Up to 12 samples in one run
- Sample volumes from 2mL to 50mL
- Up to 80 mg of protein or antibody per sample
- Purify 12 samples is less than 1 hour

**MagBeads** - Advance your Proteomics Research

Magnetic separation

- eliminates the changes of micro tubes
- minimizes the loss of sample and
- removes excessive steps of traditional centrifugation method

HiPo MPP-96

Microplate Photometer



CHF 6'280

Measuring results in 96-well plates
of ELISA & microbiological studies

- Result in 3 clicks
- Visual reports
- QuantAssay software

TS-100

Thermoshaker



CHF 1'740

for microtubes & PCR plates
Intensive mixing & Temperatur control



FVL-2400N

Mini-Centrifuge | Vortex CombiSpin



CHF 500

Centrifuge & mixing modules
simultaneous mixing & separation of samples



3D-IW8 Inteliwasher



CHF 5'010

Designed for washing
96-well plates, Microstrips & more

- Washing mode
- Rinsing mode
- Mixing mode

CTR-6 CO₂ Tube Roller



CHF 1'260

Rocking & Rolling
of up to 6 rollers

- For use in harsh environments such as CO₂ & humidity
- Reproducible results for cell culture growth

CPS-20 CO₂ Shaker



CHF 2'510

Specifically designed for use
in CO₂ incubators

- 5 interchangeable platforms
- Guaranteed service life up to 35'000 hours

LMC-56 Centrifuge



CHF 2'700

Modern, low-speed
benchtop centrifuge

MR-1 | MR-12 Rocker Shaker



CHF 670 | 1'670

Provides both soft & intensive
mixing of solutions

- Maximum load: 1 kg | 5 kg
- 2 year warranty

Assist Pipettes



starting @
CHF 180

Available in single,
8 or 12 channel options

- UV resistant & fully autoclavable



ORBIT™ 1000 Digital Shaker



CHF 1'670.00 | excl. VAT

- Four available platform configurations
- Mid-range orbit for excellent culture aeration
- Compact construction for incubator use
- Solid and heavy duty

ProBlot 25D High Capacity Rocker



CHF 99000 | excl. VAT

- Staining, hybridization, washing, etc.
- Compact size, low profile
- Extremely quiet
- Double platform option expands usable space (26x20cm)

AccuTherm™ Microtube Shaking Incubator



CHF 1'880.00 | excl. VAT



between CHF 270.00 - 420.00 | excl. VAT

- Eight interchangeable aluminum blocks accommodate PCR plates & tubes ranging from 0.2mL - 15mm
- Fine-tune speed control
- Rapid heating and cooling
- Compact footprint

Plastic consumables

- Tissue Culture Products
- Centrifuge Tubes Products
- Pipette tips
- Serological Pipettes
- Filtration Products



Cryogenic Storage

Ensure standardized, controlled-rate freezing **for all cell types**

