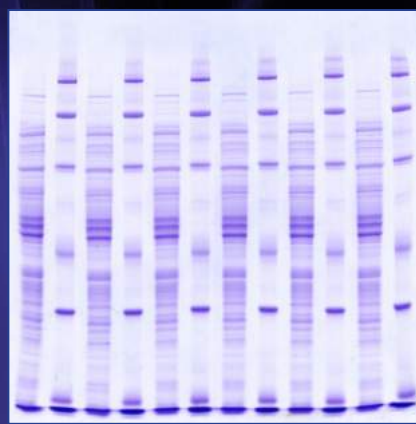


Isoelectric Focusing



SDS PAGE

# Protein Electrophoresis Seminar

**witec ag**  
**SERVA**

## Invitation

### Gel-Based Protein Electrophoresis

Speaker: Günter Theßeling, Dr. Tim Hander

9:00 h – 10:30 h

**Basic Principles of Protein Electrophoresis –**

**Various Gel Systems and Separation Techniques**

- Zone Electrophoresis
- Isotachopheresis
- Isoelectric Focusing

10:30 h – 10:45 h

**Practical Demonstration: Electrophoretical Separation of  
Fluorescent Labelled Protein Samples**

10:45 h – 11:00 h

**Coffee Break**

11:00 h – 11:15 h

**Fluorescence Staining Techniques**

11:15 h – 11:30 h

**End of the Electrophoretic Separation and Direct  
Fluorescence Gel Documentation**

11:30 h – 12:15 h

**Practical Aspects of 1D Electrophoresis**

- Sample Preparation
- How to Cast Gels
- Native and BlueNative Electrophoresis
- SDS Laemmli PAGE
- Isoelectric Focusing
- Trouble Shooting

12:15 h – 12:45 h

**Methods Specific Protein Detection by Western Blotting -  
Detection, Imaging, Data Analysis**

12:45 h – 13:00 h

**Questions and Answers**



"Deep Inside" of Letitia Cloarec (France) Photo and Art contest, by courtesy of EuPA

**Universität Bern**  
**Departement Klinische Forschung**

**August 25, 2017**

**Room: H 810**  
**Maurice E Müller Haus**  
**Murtenstrasse 35**  
**3008 Bern**

To register please click [here>>](#)  
or send us an e-mail: [mail@witec.ch](mailto:mail@witec.ch)

Attendance is free