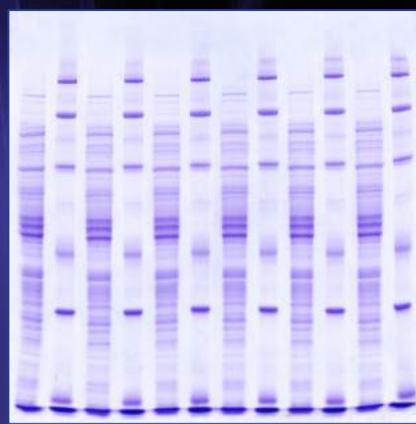


Isoelectric Focusing



SDS PAGE

Protein Electrophoresis Seminar

witec ag
SERVA

Invitation

Gel-Based Protein Electrophoresis

Speaker: Günter Theßeling, Dr. Tim Hander

14:15 h – 15:30 h

Basic Principles of Protein Electrophoresis –

Various Gel Systems and Separation Techniques

- Zone Electrophoresis
- Isotachopheresis
- Isoelectric Focusing

15:30 h – 15:45 h

**Practical Demonstration: Electrophoretical Separation of
Fluorescent Labelled Protein Samples**

15:45 h – 16:00 h

Coffee Break

16:00 h – 16:15 h

Fluorescence Staining Techniques

16:15 h – 16:30 h

**End of the Electrophoretic Separation and Direct
Fluorescence Gel Documentation**

16:30 h – 17:15 h

Practical Aspects of 1D Electrophoresis

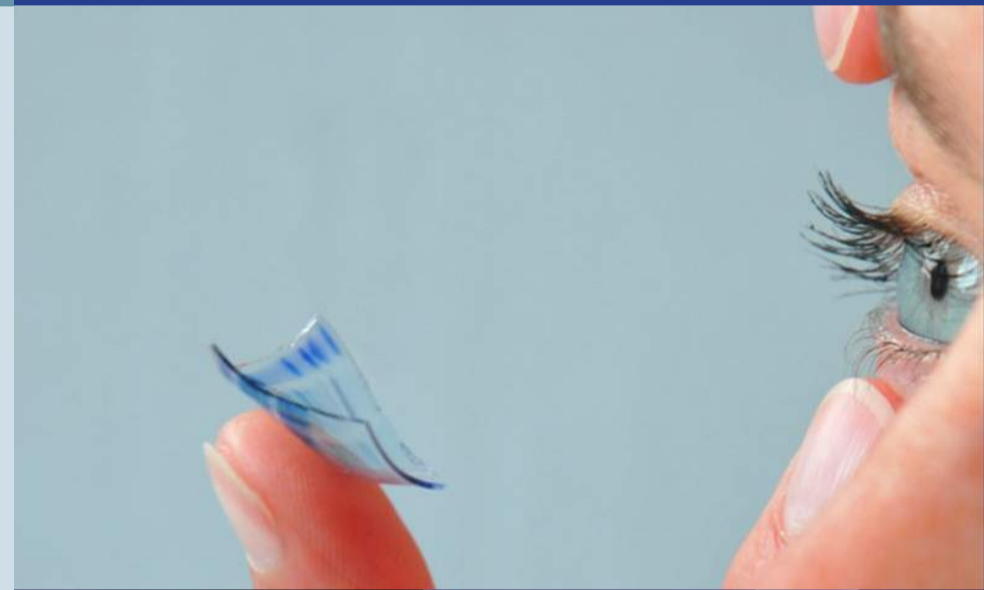
- Sample Preparation
- How to Cast Gels
- Native and BlueNative Electrophoresis
- SDS Laemmli PAGE
- Isoelectric Focusing
- Trouble Shooting

17:15 h – 17:45 h

**Methods Specific Protein Detection by Western Blotting -
Detection, Imaging, Data Analysis**

17:45 h – 18:00 h

Questions and Answers



"Deep Inside" of Letitia Cloarec (France) Photo and Art contest, by courtesy of EuPA

Universität Basel

August 22, 2017

**Seminarroom 2nd floor
Hebelstrasse 20
4056 Basel**

To register please click [here](#)>>
or send us an e-mail: mail@witec.ch

Attendance is free